

Book No 9.

)(

H. A. ALLARD.

Field

Collection

Numbers.

11438 - 12774

H. A. Allard Field Notes 11438 - 12774

In event of death
please turn this book
over to E. C. Leonard,
U. S. National Herbarium,
Smithsonian Institution

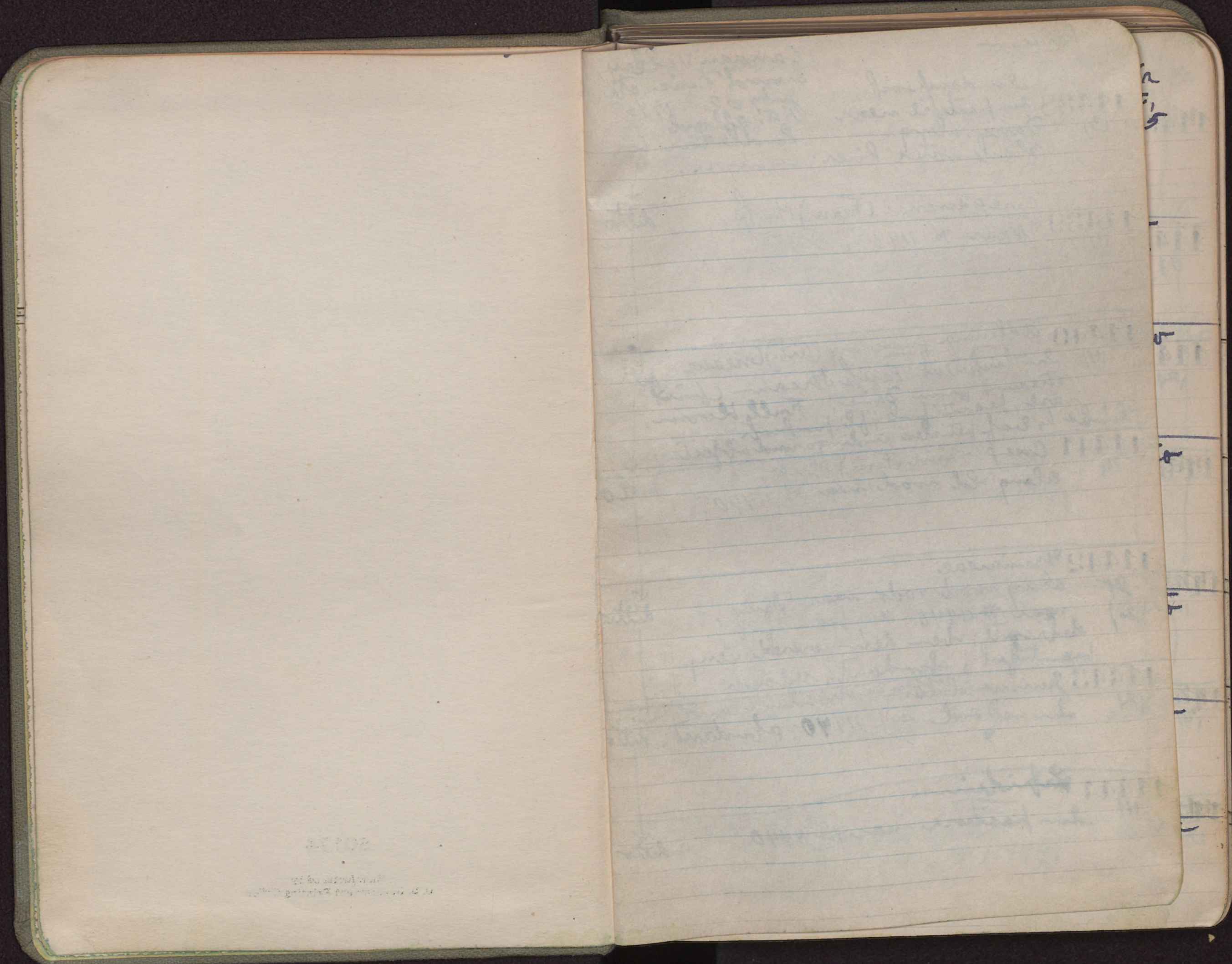
Allard, H. A. Dominican Rep. (a few), Va., W. Va.
1945 - 1947.

Book 9.

Field Notes nos. 11438 - 12372
(12373 - 12999, not used.)

50174

Manufactured by
U. S. Government Printing Office



2013
The University of
the State of New York

2-2

9

9

11

1

1

Panicum

Canaan Valley,
around Davis, etc. W. Va.
July 30, 1945
H.A. Allard
Pendleton Co.

11438 (3) In damp soil
in pasture near
Davis, along
Blackwater River; common.

11439 (1) Carex swanii (Fern.) Mack. ditto
Near # 11438.

11440 (4) Adiantum fungosum (Ait.) Greene ditto
In thicket at Tank Stream (first
stream from Davis. Fully bloomed,
rare, beautiful; fl. pinkish.
Climbs by leaf petioles winding around objects.

11441 (1) Carex swanii (Fern.) Mack. ditto
along old road near # 11440.

11442 (2) Gramineae ditto
along woodroads near Davis,
near # 11440. Very beautiful,
delicate; when dense covered very
beautiful; abundant; reddish.

11443 (2) Juncus solitarius var. solutus Fern. & Wieg. ditto
In wet soil near 11440; abundant.

11444 (1) Lepidium ditto
In pasture near # 11440

Juncus articulatus L.

Canaan Valley
Near Davis, W. Va.
Pendleton Co.,
July 30, 1945
H.A. Allard

11445 (4) In water near
11438

11446 (2) Elymus ditto
In thicket along Blackwater River
near Davis, W. Va.

11447 (1) Gramineae ditto
Near # 11446
Same as # 11442.

11448 (3) Panicum ditto
In thicket near # 11446;
abundant.

11449 (1) Polytrichum ditto
Along 2nd
stream across Blackwater
from Davis.

11450 (1) Sphagnum ditto
with # 11449

11451 (1) Moss ditto
on submerged rocks
in stream near # 11449;
same stream.

Moss
On submerged rocks in 2nd
stream flowing into Blackwater Canyon,
across river from Davis, W. Va. Pendleton
11452 July 30, 1945
H.A. Allard

11453 *Juncus effusus* var. *solutus*
along Blackwater River ditto
near Davis, Pendleton Co., W. Va.

11454 *Panicum*
(2) In thicket along Blackwater River, ditto
near Davis, Pendleton Co., W. Va.

11455 *Gentiana linearis* Frael.
In bog 3 miles east of Blackwater River near Canaan fire tower. ditto
July 31, 1945
Painted out to me by Jim

11456 *Gentiana linearis* Frael. white
form, with greenish corolla tip as in ditto
the typical plant: rare.
Growing with 11455, and in no other locality here

11457 Fern
(4) In rich woods deep down on slope of ditto
Blackwater Canyon near Pendleton
Run, where it begins to enter the
Blackwater.

11458 *Carex debilis* var. *rudgei* Bailey ditto
(2) on cliffs at lookout over Blackwater
canyon 3 miles west of Davis, in thin soil.

Moss
On decayed logs and
rocks near #11457
11459
U/

Canaan Valley
Pendleton Co., W. Va
near Davis
July 31, 1945

11460 *Houstonia*
about through flowering. ditto
at bottom of Blackwater Canyon
on banks, near Pendleton Run.

11461 Grass
at bottom of Blackwater Canyon ditto
on bank near water's edge, near
Pendleton Run. (at bottom of Canyon)

11462 *Salix*
(4) at foot of Blackwater Canyon ditto
with 11461

11463 Moss
(4) on rocks at foot of Blackwater Canyon. ditto
near # 11462

11464 Moss
(1) Behind high falls 30-35 ft. high ditto
at foot of Pendleton Run in
Blackwater Canyon, moist soil.

11465 Moss
(1) On logs at bottom of ditto
Blackwater Canyon near
Pendleton Run, in permanent
spray and mist of high falls here

Canaan Valley,
Pendleton Co., W. Va.
near Paris.
July 31, 1945

Hypericum
In crevices behind
high falls on Pendleton
Run, near junction
with Blackwater River
in mist and spray.

11466
" ditto
11467 Hypericum
(2) on rock shelves with # 11466,
behind the falls itself.

11468 Fern
2 On moist wooded banks near
11466, in mist of falls.

11469 Fern
(1) with # 11466 in wet soil and
mists.

11470 Behind falls with # 11466
(1) Hypericum

11471 Juncus tenuis Willd.
" In old field just west of
Paris.

11472 Moss
" On wet rocks behind falls
with # 11466, at foot of Pendleton Run.

Canaan Valley,
Pendleton Co., W. Va.,
near Paris
July 31, 1945
H. A. Allard

Hepatic
In same habitat
11473 with # 11466 at
foot of Pendleton Run,
" behind falls.

11474 Moss
" In Blackwater Canyon at
bottom near junction with
Pendleton Run.

11475 Moss
" with # 11474

11476 Moss
" On wet rocks with # 11474
at bottom of Canyon near
Pendleton Run.

11477 Hepatic
" with # 11466 behind falls.

11478 Moss
" On wet rocks with # 11474

11479 Oxybolis rigidior (L.) Coult. & Rose ditto
" In thicket 2 miles east of
Paris on old railroad grade
to former
Canyon 70
Aug 1, 1945

Gramineae
On railroad grade
3 1/2 miles east of Davis,
11480 near old railroad
(1) lumber camp 70,

Canaan Valley
~~Pendleton~~ Co., W. Va.
Turkey
near Davis,
Aug. 1 1945
H.A. Allard.

11481 *Spiraea latifolia* Benth.
(1) ~~1~~ branch from each clump over
wide area; note variations in pubescence.
This a mass collection.

ditto

11482 Labiatae (pink bl.)
(1) In waste ground at old pulp
mill near just east of Blackwater
bridge at Davis.

ditto

11483 *Carex folliculata* L.
(1) In bog 3 miles east of Davis
along Blackwater River. (my first find
in area)

ditto

11484 Gramineae
(1) In upland situation near # 11483.

ditto

11485 *Eriophorum virginicum* L.
(1) In bog near # 11483; very
abundant; white and brown forms.

ditto

11486 *Aporosa androsaeifolia* L.
(1) In thicket near 11483;
everywhere.

ditto

Polygonum
In dry cinder soil
11487 on railroad
(1) grade, and 3 miles
east of Davis; local
in area.

Canaan Valley
Pendleton Co., W. Va.
near Davis
Aug. 1945
H.A. Allard

11488 *Geraniaceae linearis* Truel. ditto
(1) bl. blue.
In bog near # 11487; very
common in bog.

ditto

11489 *Asclepias tuberosa* L. ditto
(1) along Blackwater river 3 1/2 miles
east of Davis, near railroad
grade. In dry cinder soil;
rare in the area.

ditto

11490 *Dulichium arundinaceum* (L.) Britton ditto
(3) In bog near # 11489; infrequent
in area; my first record here.

ditto

11491 *Rosa*
(2) In thicket near 11483.

ditto

11492 Gramineae
(1) In bog near 11489; frequent.

ditto

11493 *Scirpus atrovirens* Muhl. ditto
(1) In bog ground 3 miles east of
Blackwater river near Blackwater
river.

ditto

Patentella recta L. Canaan Valley, W. Va., Pendleton Co.
In pasture near old ^{Truck} mill ruins near Davis; Aug. 1, 1945
11494 at bridge over the Blackwater at Davis; H.A. Allard.
" infrequent in area; my first record.

11495 *Aster lucidulus* (Gray) Wieg. ditto
" In low ground along Blackwater river 3 miles east of Davis; the commonest aster in the area; fl. blue. just coming into flower; probably a

11496 *Solidago graminifolia* (L.) Salisb. ditto
" var. of *humilis*, as very close to it. Eriogonum common; the only form here, it nearly glabrous above. This near # 11495; just coming into flower.

11497 *Juncus effusus* var. *solutus* Torr. & Wieg. ditto
" In boggy land in roadcut 3 miles east of Davis on old railroad grade; large pure stands here.

11498 *Solidago rugosa* Mill. ditto
" along old railroad grade 2 miles east of Davis; common.

11499 *Aporosa cannabinum* L. ditto
" Near # 11498 in ~~dry~~ soil; frequent.

11500 *Verbena hastata* L. ditto
" Along Blackwater river near bridge at Davis; fl. purple-blue; common.

Juncus articulatus L. Canaan Valley, Pendleton Co., W. Va.
along Blackwater near bridge ^{near} ruins of mill; Aug. 1, 1945
11501 mill at Davis. H.A. Allard.
" = *Juncus articulatus* L. Near Davis

11502 *Rhexia virginica* L. ditto
" In moist gully along Canyon Run Trail below Thomas, in Nat. forest; infrequent Aug. 2, 1945

11503 Moss. ditto
" On submerged rock in 2nd (Canaan stream) on left bank of Blackwater river. Aug. 2.

11504 Moss ditto
" On submerged rock with # 11503.

11505 Moss ditto
" On submerged rock in ~~submerged~~ stream (Canaan) with # 11503.

11506 Moss ditto
" On submerged rock in same stream with # 11503.

11507 Moss ditto
" On submerged rock with # 11503 (same stream)

Moss
On submerged rocks in
2nd (Caroan stream)
11508 flowering into
Blackswater canyon near Davis.
Caroan Valley, W. Va
Pendleton Co.,
Near Davis
Aug. 2 1945

11509 Moss
On submerged rocks with # 11508, in
same stream. ditto

11510 *Rhynchospora virginica* L.
On moist soil along truck road
road (Canyon Rim truck trail)
near Douglas. ditto

11511 Moss
On submerged rocks with # 11508 ditto

11512 Moss
On submerged rocks with
11508 ditto

11513 *Sphagnum*
On banks near # 11508 ditto

11514 Moss
On submerged rocks with
11508. ditto

Moss
On submerged rocks
11515 with # 11508.
in Caroan stream. H.A. Allard.
Caroan Valley, W. Va
Pendleton Co.,
Near Davis
Aug. 2 1945

11516 Moss
On submerged rocks in
Caroan stream with 11508 ditto

11517 *Helianthus decapetalus* L.
On Backbone mountain
at 3700 feet, near Thomas.
along road roads (truck trail around
Canyon rim.) ditto

11518 *Aristolochia macrophylla* Lam.
Near # 11517; abundant
here, climbing to tops of tallest trees;
only fully green rods now. ditto

11519 Moss. Bottom of
On rocks at Blackswater
Canyon near Pendleton Run. ditto
(Date out of regular order as
July 31, 1945)

11520 *Aster prenanthoides* Muhl. Aug 3, ditto
fl. violet.
In low ground on Caroan Mt., near
fire tower south of Davis.

11521 *Desmodium canadense* (L.) DC. Aug 3
Roadside bank near Red Run ditto
postoffice; occasional; showy with
its large, purple flowers.

actinomeria alternifolia L. DC. Canaan Valley, W. Va
Berkeley Co.,
Near Davis
11522 In waste ground near Red Run
" " hut office. Aug. 3, 1945
H.A. Allard.

11523 *Astragalus canadensis* L. ditto
" (5) fl. greenish green color.
On dry rocky banks on Dry Fork
near Hendricks; local.

11524 *Arisema altissimum* (L.) Spreng ditto
" (1) On Dry Fork in thickets and on
roadside banks near # 11523; local;
Grows 10 feet or more tall.

11525 *Rubus odoratus* L. ditto
" (1) In thickets along roadsides
etc., on Dry Fork near Hendricks,
very common; fruit rather insipid,
red.

11526 *Aralia racemosa* L. ditto
" (4) on roadside banks in woods,
on Dry Fork toward Hendricks;
frequent here.

11527 Moss: ditto
" (1) on wet limestone rocks above a
mountain stream has cut a deep well in
the rocks on the Dry Fork road.

11528 *Compositae* ditto
" (1) In moist, wooded ravine
on Dry Fork toward Hendricks.
Polypodium nudicaulis L.
(stems pretty smooth).

Labatae. Collinsia canadensis L. Canaan Valley, W. Va
Berkeley Co.,
In rich woods
near Mill Run, near Davis,
11529 Dry Fork, on Aug 3, 1945
" (1) road to Hendricks, H.A. Allard.
Fl. yellowish,

11530 *Sedum ternatum* ditto
" (1) On dry slopes on ~~Dry Fork~~ limestone
outcrops toward in woods on Dry Fork
toward Hendricks; abundant. Past flowering

11531 *Gaura biennis* L. ditto
" (1) Roadside bank on Dry Fork
near Hendricks; fl. pinkish.

11532 *Monarda didyma* L. ditto
" (2) fl. pink in this colony; they
occur in other colonies, red,
and also purplish red. Near # 11531

11533 *Cuscuta parasitizing* ditto
" (2) *Monarda didyma* L.
On Elk Lick near Parsons.

11534 Umbelliferae ditto
" (1) On wooded bank on Elk
Lick near Parsons.

11535 *Berberis canadensis* Mill ditto
" (1) On steep bank in woods
on Elk Lick near Parsons.

Minulus ringens L. Canaan Valley, W. Va.
In bog on Elk ~~Pendleton~~ Co.,
11536 Lick on Dry Near Davis,
(3) Fork road Aug. 3, 1945
toward Hendricks; H.A. Allard.
common

11537 *Campanula americana* L. ditto
(4) along roadside on
Dry Fork road toward Hendricks.
fl. blue; very showy, abundant, but
not in the Davis region.

11538 *Vaccinium macrocarpon* Nutt. ditto
" In bog on Canaan Mt., just
south of Davis at left of highway
to Seneca Rocks. scattered throughout
the region.

11539 *Melampyrum lineare* Lam. ditto
" Near fire tower on top of
Canaan Mt., in open thickets;
frequent.

11540 *Labiatae agastache squulariaefolia* (L.) Greene ditto
(4) fl. whitish with characters also of *A. neptoides*.
On roadside bank on Dry Fork
road toward Hendricks; infrequent.

11541 *Desmodium canadense* L. ditto
" On steep lime-stone banks
on Dry Fork road to Hendricks;
infrequent; fl. purple, showy, large.

11542 Moss ditto
" In cold limestone spring
(50° F) near Mill Run on Dry
Fork road to Hendricks.

Morarda dioica L. Canaan Valley,
Pendleton Co., W. Va.
In thickets near Mill Run on Dry Fork
11543 Near Davis,
road to Hendricks. Aug. 3, 1945
(3) fl. whitish; Mrs. Cranmer, forest employee,
thought it a form of *M. dioica*
with white fl. H.A. Allard

11544 Moist soil on Elk Run ditto
" on Dry Fork road to Hendricks;
Asclepias

Asclepias incarnata L. ditto
11545 In moist soil near
" Elk Run, on Dry Fork road
to Hendricks; frequent; showy,
purplish red.

11546 *Lobelia cardinalis* L. ditto
" In boggy meadow thicket
near Elk Run with # 11545;
frequent; very showy, crimson.

11547 *Impatiens pallida* Nutt. ditto
" In moist soil near Elk Run
on Dry Fork road to Hendricks;
near a colony of ~~same~~ fl. of
same species = # 11548
pale yellow

11548 *Impatiens pallida* Nutt. ditto
(2) white fl. form of *Impatiens*
pallida Nutt., growing as a colony
near # 11547, yellow. In drying turns
more yellow. Near # 11547 (rare.)

11549 *Aster divaricatus* L. ? ditto
" fl. white very variable.
In woods at Elk Run, on Dry Fork
road to Hendricks; frequent.

Moss
 at Blackwater Canyon
 Falls visited by tourists.
 11550 On mist drenched
 rocks under the Falls.
 Canaan Valley, W. Va
 Poppleton Co
 Aug. 4, 1945
 H.A. Allard
 Near Davis.

Moss
 11551 On rocks with # 11550,
 at the Falls.
 ditto

Moss
 11552 On submerged rocks
 at above Falls.
 ditto

11553 *Asclepias syriaca* L.
 (2) Near 1st stream = Tank stream
 in waste ground; fl. deep purplish
 red, much deeper than most colonies.
 ditto

11554 *Convolvulus arvensis* L.
 (2) at Thomas, climbing over
 herbage by railroad; fl. pinkish.
 ditto

11555 *Carex leptalea* Walp.
 (1) In damp soil at Blackwater
 Falls visited by tourists.
 ditto

11556 *Panicum*
 (2) In canyon at Blackwater
 Falls in rocky slope.
 ditto

Carex baileyi Britt. Canaan Valley, W. Va
 at forest sign on high
 mountain near
 11557 Parsons - sign road
 Bl. Turkey Run trail }
 Moore Run " }
 → Big Spring Trail 1 mile.
 Poppleton Co.
 Aug. 5, 1945
 H.A. Allard

11558 *Scirpus atrovirens* (L.) Kunth.
 (1) In moist soil high up mountain
 with # 11557.
 ditto

11559 Umbellifer
 (1) On Red Run 3 miles from
 Hendricks in thicket.
 ditto

11560 *Astragalus canadensis* L.
 (1) Along Red Run 3 miles from
 Hendricks.
 ditto

11561 *Agastache scrophulariifolia* ?
 (2) Near Red Run on road to Hendricks;
 is Dry Fork road.
 ditto

11562 *Daucus carota* L.
 (1) with additional umbels.
 near # 11561 (white fl.)
 ditto

11563 *Cirsium arvense* (L.) Scop.
 (1) on road to Hendricks
 at Red Run; common.
 ditto

Desmodium canadense L. Canaan Valley, W. Va.
 along road to Red Run ~~Pendleton Co.~~
 and Hendricks; Near Davis.
 11564 local, infrequent. Aug. 5 1945
 (1) showy, blue fl. H.A. Allard

Spiraea latifolia ? ditto
 11565 One ~~plant~~ from separate
 fl. branch ditto
 (2) clump along low meadow
 on highway to Seneca, and
 at foot of Canaan Mt. a mass
 collection.

Helianthus strumosus L. ditto
 11566 Near Red Run P.O. on forest
 (2) road to Hendricks; very showy;
 frequent.

Phlox maculata L. subsp. *subgranidiflora* ditto
 11567 In damp thickets along
 (5) Red Run on road to Hendricks; nearly
 past fl. Oct. 1957

Andropogon furcatus ditto
 11568 along Red Run near Hendricks.
 (1) in moist soil.

Umbellifer ditto
 11569 2 miles above Hendricks
 (2) along Red Run (?)

Laurel Run Trail ditto
 11570 on Dry Fork road to Hendricks.
 (1) *Apocynum cannabinum* L.

Desmodium paniculatum (L.) DC. Canaan Valley, W. Va.
 Pendleton Co.
 at Laurel Run
 11571 trail on Dry Fork
 (2) near Hendricks, in
 low ground thickets. Aug. 5 1945
 H.A. Allard

Heptacis ditto
 11572 on wet rocks on Dry Fork
 (1) near Hendricks.

Grass. ditto
 11573 well up mountain trail
 (1) near Hendricks, off Dry Fork
 road.

legum. Moss ditto
 11574 On wet rocks in wet
 (1) on Dry Fork Run several
 miles above Hendricks.

Moss. ditto
 11575 On wet rocks in deep ravine
 (1) with # 11574.

Moss ditto
 11576 On wet rocks in same mt.
 (1) stream with # 11574

Sapind. ditto
 11577 with insect galls -
 (3) along stream on Dry Fork road
 several miles above Hendricks.

Gramineae
Belong stream in
11578 wet soil several
(1) miles above
Hendricks on Dry Fork road.
Canaan Valley, W. Va.
Bouquet Co.,
Tucker
Aug. 5, 1945
H.A. Allard.

11579 Vitis
(1) On Laurel Run Trail on
Dry Fork road toward Hendricks ditto

11580 Cirsium
(2) On high mountain slope
where Turkey Run Trail leads
off ^{1/2} mile
roadway on Dry Fork road ditto

11581 Phlox paniculata L.
(4) with # 11567; abundant along
this stream. ditto

11582 Umbellifer
(1) Growing in low ground along
stream in thickets with # 11581 ditto

11583 Caealia triplicifolia L.
(1) In thickets along Dry Fork
Road to Hendricks. ditto

11584 Lirium altissimum L. Spreng ditto
(2) Along Red Run 3 miles from
Hendricks - 8-10 feet tall; local.

Fern
In cold, wet bog
11585 near burning
(2) gob pile near mine
N.W. of Davis 1 mile.
Near Davis,
Canaan Valley, W. Va.
Tucker Co. H.A. Allard
Aug. 8, 1945

11586 Hypericum prolificum L ditto
(4) In pastures near # 11585;
very abundant, showy.

11587 Juncus marginatus Roth ditto
(1) In damp soil near gob pile
above.

11588 Carex folliculata L. ditto
(1) In bog with # 11585

11589 Aster lucidulus (Gray) Wieg ditto
(1) Close to A. panicus
at Fork stream (1st.) across
Blackwater River from Davis.

11590 Zieria oxyoides (L.) Sm. ditto
(3) In bog across Blackwater
River from Davis; occasional.

11591 Galium ditto
(1) Growing in low ground near
11590

Hieracium aurantiacum L. Near Davis,
in pasture across Blackwater ~~Lead~~ Co., W. Va
River from Davis. Aug. 8, 1945
11592 Occasional, fl. orange H.A. Allard,
12/ Tucker Co

11593 *Oxalis*
3/ In meadow near # 11592;
abundant. ditto

11594 *Potentilla*
4/ with # 11593 ditto

11595 Gramineae
1/ In thicket near # 11593 ditto

11596 *Galium*
2/ In low ground across Blackwater
River from Davis. ditto

11597 Gramineae
2/ In bog near # 11596; common ditto

11598 *Mniocles moschatum* Dougl.
3/ In sphagnum bog near gap hole
with # 11585: full bloom, bright
yellow; in masses; viscid hairy;
new to me for the Davis area,
very showy.

11599
2/ *Fern.*
In moist, rich woods. On Manway # 3
near truck trail along
Canyon rim to Douglas.
~~Lead~~ Co.,
Tucker Aug. 9, 1945
H.A. Allard.

11600 Moss
1/ On wet rocks near
bottom of Blackwater
Canyon near Manway # 3 ditto

11601 *Euphorbia*
2/ In dry soil along western
Maryland rail road bed
in Blackwater Canyon between
Davis, Parsons and Thomas. ditto

11602 *Oxalis*
1/ On railroad with # 11601 ditto

11603 *Hydrangea arborescens* L.
1/ Some radiant flowers.
Along railroad near # 11601.
Frequent in area. ditto

11604 Gramineae
1/ Along railroad with # 11601.
Panicum ditto

11605 *Panicum* near
1/ On Manway # 3 near # 11601.
from railroad to truck trail
~~1/2 mile above on Canyon rim.~~ ditto

Helianthus decapetalus L.
 on Manway #3, leading from Douglas, Pendleton Co., W. Va.
 11606 ¹ abundant
² truck trail to Canyon Rim
 Near Canyon Rim
 Trunk Trail to top
 of Backbone Mt. and
 Douglas, ~~Pendleton~~ W. Va.
 Aug. 9, 1945
 H.A. Allard.

11607 *Eupatorium purpureum*
 (1) Near # 11606 on same manway #3;
 very abundant along all out-roads.
 ditto

11608 *Aster umbellatus* Mill.
 (1) with # 11607 in thicket on
 manway trail # 3.
 very common.
 ditto

11609 *Aster lucidulus* (Gray) Wieg.
 (2) Close to *A. puniceus* but smoother.
 Common.
 On manway # 3 near # 11606
 ditto

11610 on wet ledge
 (1) near foot of Blackwater Canyon
 near manway # 3
 Moss
 ditto

11611 fern
 (1) In forest at foot of ledge near
 Canyon rim truck trail near
 manway # 3.
 ditto

11612 *Gentiana linearis* Froel.
 (1) In bog on Canaan Mt., near
 fire tower - only known colony.
 fl. white; large area of the
 blue here. See also 11488 from same
 colony)
 ditto

Veronica
 In ravine leading
 to crest of mt.
 11613
 (1)
 Spruce Knob.
 Driven here by
 H. P. Sturm of
 Clarkburg, W. Va.
 Aug. 10, 1945
 H.A. Allard.
 Pendleton Co.

11614 *Circaea alpina* L.
 (1) In rich woods on trail through
 ravine to crest.
 ditto
 Pendleton Co.

11615 *Geranium* ~~*virgatum*~~ *virgatum* Britton
 (1) In thicket on Lanesville road
 2 1/2 miles from highway to Seneca rocks
 Growing with strawberry raspberry shown me
 by Mrs. Sturm.
 Aug. 10.
 ditto

11616 *Carex baileyi* Britt
 (1) On top of Spruce Knob on
 trail to top where antlers park.
 Aug. 10, 1945

11617 *Rubus illecebrosus* Focke
 (several) (Nat. to Japan) a large colony
 on roadside bank on Lanesville
 road 2 1/2 miles from Seneca highway.
 (with # 11615). Fruit and flowers; fruit
 Aug. 10.

11618
 (1) bright red, rather tasteless, but pleasant,
 sweet, very large. Plants not over 1 ft. tall.
 Cut. flower from Mrs. Racey's
 garden Aug. 11, 1945, Davis,
 W. Va. Pendleton Co. fl. white
 col. H.A. Allard.
 Tucker Co.

11619
 (1) From Mrs. Keiper's fl. garden
 in Davis; a house plant,
 with purplish red fl. She called it
 Baby face, Aug. 7, 1945.
 ditto

Chrysanthemum
~~(Squatta)~~ daisy
11620 From Mrs. Keiper's
flower garden -
Aug. 7.
(ornamental)

Davis, W. Va.
Pendleton Co.,
W. Va. Aug. 7, 1945
H.A. Allard.

From Davis, W. Va.
Pendleton Co.,
W. Va. Aug. 7, 1945
H.A. Allard.

11621 ornamental
" From Mrs. Keiper's garden above
fl. white. Aug. 7. ditto

11622 ornamental
" From Mrs. Keiper's fl. garden
above. Aug. 7. ditto
Liriodendron

11623 From Mrs. Keiper's fl. garden.
Aug. 7. ditto
Helichrysum
(pink fl.)

11624 ornamental
" From Mrs. Keiper's fl. garden.
Aug. 7. ditto
Phlox paniculata L. (garden form)
(purplish fl.)

11625 white fl.
(2) From Mrs. Keiper's flower border.
Aug. 7. ditto

11626 *Centaurea*
" From Mrs. Keiper's flower border
Aug. 7. ditto
(ornamental)

ornamental
11627 (forget-me-not.)
(blue fl.)
From Mrs. Keiper's flower garden
Aug. 7. ditto

11628 *Verbena*
" fl. blue-purple
From Mrs. Keiper's fl. garden.
Aug. 7. ditto

11629 *Solidago graminifolia* (L.) Salisb.
(2) From vicinity of bridge
over Pendleton Run on
highway to Thomas farm
Davis. Aug. 7. ditto

11630 *Malva*
" garden ornamental.
From Mrs. Keiper's fl. garden.
Aug. 7. ditto

11631 *Mentha*
" highway
Near bridge over Blackwater
River opposite Davis; in wet soil.
fl. pinkish to purplish. Aug. 7. ditto

11632 *Chelone*
" (2) fl. white to faint pink.
Along canyon forks (1st stream)
across Blackwater river from
Davis, blowing into Blackwater canyon.
Aug. 7. ditto

11633 *Minules moschatus* Dougl.
" Boggy, open ravine near
near mine openings N.W. of Davis Hill (turning
left on water and shale road; 2 miles
(my first record in area) fl. yellow. Aug. 7. ditto

From. Near Davis, W. Va.
 In same red shallow, open
 ravine bog with # 11634, near
 11634 burning gob pile N.W. of
 Davis 1-2 miles, near
 mine openings; infrequent.
 August 8, 1945
 H.A. Allard.
 Tucker Co.

11635 *Carex folliculata* L.
 In same red boggy ~~ravine~~
 as over with # 11633 & 11634 ditto

11636 *Eupatorium purpureum*
 On Manway #3 leading from
 Md. railroad to truck trail on
 canyon rim to Douglas; in
 thicket. Aug. 9. ditto

11637 *Cirsium pensilvanicum* (Walt.) Spreng.
 In pastures near
 burning gob pile above.
 This a white form, becoming pale
 purple in drying. Aug. 8 ditto

11638 *Allium cernuum* Roth
 Near Seneca Rocks on highway
 to Davis; habitata shale bank. Aug. 10.
 fl. deep purple, striking.

11639 *Euphorbia lathyris* L.
 Roadside some miles from
 Seneca Rocks on highway to Davis.
 Aug. 10 ditto

11640 *Physostegia virginiana* (L.) Benth.
 In Mrs. Racey's flower border.
 (Ornamental) fl. deep purple, showy.
 Aug. 11 ditto

Helianthus laetifolius Pers.
 In Mrs. Racey's flower
 11641 border; ornamental
 and widely grown in
 this region. fl. yellow.
 Davis, W. Va.,
 Tucker Co.,
 Aug. 11, 1945
 H.A. Allard.

11642 In Mrs. Racey's flower border; ditto
 fl. deep purple.
 Full bloom now.

11643 In garden of Mrs. Schwartz ditto
 fl. Anethum graveolens L.
 widely cult. fl. yellow.

11644 *Dryopteris*
 In deep, shaded woods near
 sand pit beyond Thomas. ditto

11645 *Smilax*
 In sand pit itself beyond
 Thomas, near Fairfax stone ditto

11646 *Gaultheria procumbens* L.
 Around sandstone outcrops
 at sand pit above; abundant. ditto

11647 *Eriophorum virginicum* L.
 In water at bottom of
 sand pit above; a pure white
 sand visible for many miles. ditto

Lycopodium selago L.
immixtum L.
 Abundant in wet sand pit near 11647. In pine stands.
 var. ~~affessum~~ Dear.
 Near Thomas, W. Va., Tucker Co
 Aug. 11, 1945
 H.A. Allard.

11648 (3)
Saxifraga atro-virens Muhl
 In wet sand (lime white) at base of sand pit above. Tucker Co
 ditto

11649 (2)
Centaurea maculosa Lam
 Roadside near Strasburg, Va. very abundant here; bl. ^{white} purple. Shenandoah Co., Va
 ditto

11650 (5)
Asclepias verticillata L.
 Roadside on the Triassic area near Gainesville, Va., on dry bank. Prince William Co
 Aug. 12
 Coll. H.A. Allard
 ditto

11651 (1)
Liatris squarrosa Willd.
 on roadside banks between Gainesville and Centerville on highway; very showy, ^{red} purple fl. (full bloom) in.
 ditto ditto
 Aug. 12

11652 (2)
Asclepias
 Near Strasburg, Va., in low ground. Shenandoah Co
 ditto

11653 (3)
Oxydendron arboreum (L.) DC
 Woods near Thomas on road to Parsons; full bloom. Aug 9. Conspicuous in woods here and in forests of Blackwater canyon. H.A. Allard.

Epilobium adenocaulon ~~Humb.~~ ^{Bull Run Mt. Pond Mt. area, Fauquier Co., Va}
 Aug. 19, 1945
 H.A. Allard.
 East of New Baltimore highway and south of Thoro fare Gap, near Broad Run.
 In thicket near Thoro fare Gap. abundant; fl. pinkish.

11655 (1)
 11656 (1)
Arabia serena L.
 In thicket near Beverly Mill on Broad Run; in frequent. May first record in area; pink red.
 ditto

11657 (2)
Spiranthes
 In dry pasture just south of Thoro fare Gap; frequent.
 ditto

11658 (4)
Paspalum
 In dry soil on bog back just south of Thoro fare Gap.
 ditto

11659 (2)
 In ~~dry~~ soil on bog back cold brook edge field. 1 mile below Thoro fare Gap. Gramineae.
 ditto

11660 (1)
Botrychium
 In woods 1 mile south of Thoro fare Gap - rather dry pine & deciduous woods.
 ditto

11661 (2)
Phlox paniculata L. white f.
 In sunny thicket 1 mile S. of Thoro fare Gap; locally abundant here.
 ditto

Ludwigia polycarpa Steud. Pond Mt. area,
in very wet, muddy soil in ^{inter-} Tranquill Co., Va
meadow near Broad Run Aug. 19, 1945
11662 South of Thoro fare Gap 2 miles N.A. Allard
(2) Near Darea.

11663 In wet soil with # 11662;
(2) infrequent.
bl. - white - some bluish. ditto

11664 *Ambrosia trifida* L.
(2) var. *integrifolia* (Muhl.) T. & G. ditto
Nota good var; frequent in all colonies;
at most only a mere form. South of Thoro fare
Gap 2 miles near Broad Run.

11665 *Helianthus strumosus* L.
(3) In low ground, thicket near
Broad Run 2 miles S. of
Thoro fare Gap; common. ditto

11666 *Paspalum*
(5) In low meadow near
Broad Run 2 miles S. of
Thoro fare Gap. ditto

11667 *Scirpus*
(1) In boggy soil near Broad Run
2 miles south of Thoro fare Gap. ditto

11668 *Pedicularis lanceolata* Michx.
(4) In low meadow near Broad
Run 2 miles below Thoro fare Gap;
infrequent. My first record for area.
bl. yellowish white; leaves like sweet fern. ditto

Desmodium Pond Mt. area, Va
Tranquill Co.,
Aug. 19, 1945
H.A. Allard.

11669 In dry broomedge
field south of
Thoro fare Gap 1 mile. Near Broad Run east of
New Baltimore highway &
south of Thoro fare Gap.

11670 *Dryopteris*
(2) In damp woodland situation
near a brook; locally abundant here,
1 mile S. of Thoro fare Gap ditto

11671 Gramineae
(2) In damp swampy thicket
in woods with # 11670 ditto

11672 *Acletois purpurea* Ehrh.
(2) (bl. reddish purple)
In wet soil in swale 2 miles
below Thoro fare Gap; frequent. ditto

11673 *Convolvulus sepium* L.
(2) In thicket 2 miles south of
Thoro fare Gap near Broad Run.
bl. white to pinkish. ditto

11674 *Cassia ~~montana~~ ^{habecarpa} Torr.*
(1) In old field 2 miles
S. of Thoro fare Gap; occasional. ditto

11675 *Helianthus multiflorus* Nutt.
(1) In wet ground 2 miles below
of Thoro fare Gap near Broad Run
(New to area; infrequent).
disc. brown. ditto

Cornus
fruit blue (light)

11676 In low ground near Broad Run (2) 2 miles S. of Thoroughfare Gap, Fauquier Co. Aug. 19, 1945 H.A. Allard.

Pond Mt. area, south of Thoroughfare east of New Baltimore highway, Fauquier Co. Aug. 19, 1945 H.A. Allard.

11677 *Lud. Sahip*
" In wet soil in meadow near Broad Run 2 miles S. of Thoroughfare Gap. ditto

11678 *Panicum*
" In open swale south of Thoroughfare Gap 1/2 mile near Broad Run ditto

11679 *Paspalum*
(2) In wet soil in meadow 2 miles S. of Thoroughfare Gap and near Broad Run ditto

11680 *Apocynum tuberosum* ~~americana~~ *americana* ^{H. Ravenel} _{Medic.}
" In low ground, thicket near Broad Run south of Thoroughfare Gap 2 miles; local, infrequent; fl. red & purple. ditto

11681 *Hypericum virginicum* L.
" In boggy meadow near Broad Run south of Thoroughfare Gap 2 miles ditto

11682 *Convolvulus sepium* L.
" In thicket in meadow south of Thoroughfare Gap 2 miles, near Broad Run; abundant; fl. white to pinkish. ditto

Cuphea petiolata (L.) Koehne. Pond Mt. area Fauquier Co., Va. Aug. 19, 1945 H.A. Allard.
In meadow 2 miles S. of Thoroughfare Gap near Broad Run; common. fl. purplish red.

11684 *Eragrostis*
" In damp soil in meadow 1/2 mile S. of Thoroughfare Gap near Broad Run ditto

11685 *Nelumbo multiflorum* Nutt.
" In moist soil 2 miles S. of Thoroughfare Gap near Broad Run infrequent in area. ditto

11686 *Paspalum*
" In low, moist soil in meadow 2 miles south of Thoroughfare Gap and near Broad Run ditto

11687 Gramineae
" In ditch in woods 1 mile south of Thoroughfare Gap in moist soil ditto

11688 *Scrophularia marilandica* L.
" In rich wooded slope near Broad Run 1 mile S. of Thoroughfare Gap. ditto

11689 *Tripsacum dactyloides* L.
" Roadside near Haymarket, on Triassic area; my first record for area; appears to be spreading; was not here until last year or two. Prince William Co. ditto

Cassia marilandica *hebecarpa* Fern.
Near Haymarket by ^{Prime Road Mt. area,}
roadside. ^{Fauquier Co.,}
11690 Aug. 19, 1945
H.A. Allard

11691 *Phlox paniculata* L. fl. purplish. ditto
(2) In swampy thicket 1 mile S. of
Thoroughfare Gap; local. bl. ~~white~~ in
these colonies range from white to
reddish purple.

11692 *Juncus bresicandatus* Davis, Tucker Co.,
(Engelm.) Fern. W. Va., Aug. 3, 1945
H.A. Allard,
near burning job pile near mine
entrance 1 mile NW of Davis, in moist soil.

11693 *Nedera helix* L.
(1) From C.W. Culpepper's place
4435 North Pershing Drive,
Arlington, Arlington Co.,
Aug. 14, 1935
H.A. Allard

11694 *Hibiscus* (crimson fl.) one pinkish white
color in drying deep red. bl. from another
From Mrs. Culpepper's grounds near,
above - Aug. 20, 1945. H.A. Allard

11695 *Lagerstroemia*
(1) From Mrs. Sidney Sharp's
garden, Arlington, Arlington Co., Va.
Aug. 21, 1945. H.A. Allard
bl. lilac-purple.

11696 *Lagerstroemia*
(2) bl. bright red.
From Mrs. Sharp's garden
also - Aug. 21, 1945
H.A. Allard

Lonicera sempervirens L.
From C.W. Culpepper's grounds,
4435 North Pershing Drive,
11697 Arlington, Arlington Co., Va.
(2) ornamental. Corolla red
and yellow.

11698 *Porp* lichens - blowing into Parkwater
In Canadian stream,
(1) Aug. 2, 1945 canyon above the "
Ries from Davis,
on sandstone Tucker Co., W. Va.
rocks.

11699 *Spiranthes*
(1) In dry pasture at left of Road Mt.,
near National highway Fauquier Co., Va
near Thoroughfare Gap; frequent Aug. 26, 1945
H.A. Allard.

11700 *Polygala*
(1) Spring near # 11702; infrequent. ditto
bl. purplish.

11701 *Leguminosae*
(2) In same pasture and ditto
thicket with # 11702; frequent;
bl. white.

11702 *Linum*
(2) In ^{dry} brushy pasture on west ditto
slope one mile south of Thoroughfare Gap;
bl. yellow; frequent.

11703 *Sorghastrum nutans* (L.) Nash. ditto
(1) In thicket on west slope
1 mile south of Thoroughfare Gap;
common.

Helianthus decapetalus L. Pond Mt., Va
Franquier Co., Va
Aug. 26, 1945
H.A. Allard
11704 along road on
west slope 2 miles
south of Barofore Gap; frequent.

11705 *Festuca villosa* Jacq. ditto
all from same plant,
along same road in same
Gap, near # 11709; fl. blue; common.

11706 *Amphicarpa bracteata* (L.) Fern. ditto
In thicket at same Gap etc. with
11709; fl. purplish or bluish white;
very high climbing (8 ft.)

11707 *Polygonum erectum* L. ditto
In ^{same} road and Gap with
11709; occasional.

11708 *Aquatiche natoides* (L.) Ktze. ditto
In thicket near # 11709;
fl. whitish to greenish yellow;
infrequent.

11709 *Eupatorium torreyanum* Short. ditto
In thicket along road
in Gap near west slope 2 miles
south of Barofore Gap; occasional

11710 *Desmodium* ditto
In dry pine woods near
Broad Run 2 1/2 miles south
of Barofore Gap, east of New Baltimore
highway.

Sporobolus laevis L. Pond Mt., Va
Franquier Co., Va
Aug. 26, 1945
H.A. Allard
11711 ^{same} in corn field
with # 11712; frequent.

11712 *Quaroclitococcinea* (L.) Moench. ditto
In cornfield on east slope
west of New Baltimore highway 2 mi.
south of Barofore Gap; frequent.
fl. crimson.

11713 Umbelliferae ditto
In boggy ground along brook
near Broad Run 2 1/2 miles south
of Barofore Gap; frequent.

11714 *Lespedeza* ditto
In thicket near Broad Run
2 1/2 miles south of Barofore Gap
infrequent; fl. cream colored.

11715 *Cyperus* ditto
Growing near # 11715 same
habitat; frequent.

11716 *Ludwigia polycarpa* Short and Peter ditto
In very wet, boggy meadow near
Broad Run 2 miles south of
Barofore Gap, New Va area; infrequent.

11717 *Hypericum prolificum* L. ditto
In meadow near Broad
Run 2 miles south of
Barofore Gap; very common.

Pedicularis lanceolata Michx.
In boggy meadow
11718 near Broad Run
" 2 miles south of Thoro fare Gap;
rare; fl. yellowish.
just in bloom.

Pond Mt., Va
Fauquier Co.
Aug. 26, 1945
H.A. Allard

11719 *Cassia hebecarpa* Fern.
" In meadow 2 1/2 miles
south of Broad Run; frequent.

ditto

11720 gulf on grassy leaves.
" 2 miles south of Thoro fare
Gap and east of New Baltimore
highway.

ditto

11721 *Cassia nictitans* L.
(2) Everywhere in pastures and old
fields. These collected in meadow
2 1/2 miles south of Thoro fare Gap
near Broad Run.

ditto

11722 *Eragrostis*
" In meadow 2 3/4 miles south of
Thoro fare Gap near Broad Run;
frequent.

ditto

11723 *Cuscuta pentagona* Engelm.
(2) *C. leptocarpa* stipulacea Maxim.
in pasture 1/2 mile south of Thoro fare
Gap and east of New Baltimore highway.
Common on this *Leptocarpa*.

ditto

11724 *Cassia hebecarpa* Fern.
(2) In thicket 1/4 mile south
of Thoro fare Gap, east of New
Baltimore highway; frequent

ditto

Umbelliferae.
In pasture just south of
Thoro fare Gap; frequent;
11725 fl. whitish.

Pond Mt., Va
Fauquier Co.,
Aug. 26, 1945
H.A. Allard

(2) *Cassia marilandica* L.
In thicket in old field 1/2 mile south of
Thoro fare Gap east of New Baltimore highway;
occasional tall from same height.

11726 *Corylus americana* Walt.
" In thicket at Thoro fare Gap; frequent.

ditto

11727
" *Lycopodium virginicum* L.
In low ground near Broad Run
at Thoro fare Gap; fl. white; frequent.

ditto

11728
(2) *Cassia nictitans* L.
In dry pasture just south of
Thoro fare Gap; very common.

ditto

11729 = Umbelliferae
(2)

ditto

11730 *Hibiscus*
" fl. crimson
C.W. Culpepper's grounds
4435 North Arlington Drive
Arlington, Arlington Co.,
Va. Sept. 1, 1945
H.A. Allard

11731 *Aster discoloratus* L.
" fl. white
sold by a seedman as an
ornamental and purchased
by Mrs. Culpepper; a common
wild aster.

ditto

~~Desmodium~~
Oxalis ^{pe. yellow}
11732 In grassy
pasture with
(3) end of road where
re parked car.
Massanutten Mts.,
West slope east of
Woodstock, Va
Shenandoah Co., at
end of Pugh's Run road.
Sept 3, 1945
H.A. Allard

11733 Desmodium
(3) along woodroad at foot of
west slope near Sheppard oak
near the old Boyer brick house.
ditto

11734 Desmodium
" On same wood road near
11733
ditto

11735 Houstonia
(7) on steep shale barrens east of
Woodstock, back of the old brick
Boyer home; frequent.
ditto

11736 Lespedeza
" on shale barrens with # 11735
ditto

11737 Mazz
" on rock beside Sheppard oak
River ~~on~~ near west slope of
Massanutten Mts, east of
Woodstock
ditto

11738 Chenopodium
(3) In thin woods on shales
near # 11736.
ditto

Panicum
on shale barrens
with # 11735
11739
(1)
Massanutten Mt., Va
Sheppard oak lo.
west slope, east of Woodstock,
Sept. 3, 1945. H.A. Allard

11740 Centaurea maculosa Lam
" In Alleghenies, beyond
North River Gap, on good soil
on road to Camp Todd,
Rockingham Co., in Geo.
Wash. Nat. Forest. Sept 2, 1945
H.A. Allard; locally abundant
here, and within past few years.

11741 Cladonia
" on soil on Little Bald Mt., in Alleghenies,
Rockingham Co., Va., Sept. 2, 1945
H.A. Allard, at 2000 ft.

11742 Cladonia
" on soil near # 11741, on Little Bald.
Sept. 3, 1945
H.A. Allard

11743 Cladonia
" on soil near # 11741 on
Little Bald at 2000 ft.
Sept. 3, 1945
H.A. Allard

11744 Vaccinium vacillans group
(7) on west slope of Little Bald, in
Alleghenies at Camp Todd, Va. in
North River Gap, at 2500 feet. Sept 2, 1945
H.A. Allard. Ripens very late

11745 (3) Carpinus
" about Sept. 1. Discovered this colony
several years ago.
At Camp Todd, in Alleghenies at
foot of Big Bald, Rockingham Co., Va.
Sept. 2, 1945. H.A. Allard.

Eucharbia
 on shales on west slope of Massanutten
 Mt. east of Woodstock. These shales
 11746 back of old Mr. Boyer's brick home
 " on the Shenandoah here.
 Sept. 3, 1945. H. A. Allard.

11747 Kudzu vine *Pueraria* 7th and Filmore St.
 (19) This growing to peak Mrs. Skelly's
 of house and in full Arlington, Va.
 bloom; fl. purplish red, very Sept. 6, 1945
 fragrant even at a distance. H. A. Allard.
 After the Kudzu does not flower here

11748 *Geaster reticulatus* Morgan. ditto
 on shales in thin woods
 near Shenandoah River; very
 abundant here

11749 *Clematis virginiana* L.
 (14) spontaneous on fence. H. A. Allard's grounds
 ornamental. 3000-7th St. North,
 (a weed) Arlington, Va.
 Sept. 9, 1945
 H. A. Allard.

11750 grass
 (15) Tall 3-3 1/2 ft high; in
 dwarf sward Sept. 9, 1945 ditto

11751 *Cardiaspermus haliacabund* L.
 (12) annual; planted in
 flower bed; climbs by winding its flower
 branches around subjects; fl. small
 water ditto
 very delicate vine; poor ornamental.

11752 *Sedum cretaceum* Gray
 (11) on west slope of Little Bald Knob
 in Alleghenies near Camp Todd Sept 21,
 at 2000 ft. very common on dry
 shaly banks; past bloomer. H. A. Allard 1945

Siyas angulatus L. H. A. Allard's
 garden, 3000-7th St.
 North, Arlington,
 Arlington Co., Va
 Sept. 9, 1945
 H. A. Allard
 Very high-climbing,
 climbing to tops of
 11753 my pear trees 20-
 (3) 25 feet high;
 a persistent, annual weed.

11754 *Vitis* sp. ditto
 (18) a Manchurian sp. from Asia -
 S. P. L. ornamental; orig. label lost.
 Fruit small, blue; persistent.

11755 *Caryopteris incana* C. W. Cuppfer's ground
 (2) ornamental. 4435 North Pershing Drive,
 fl. bluish. Arlington, Arlington Co., Va.
 Sept. 12, 1945

11756 *Lepedeza*
 (2) fl. deep reddish purple, showy.
 ornamental ditto

11757 *Petunia*
 (5) flowers dark red,
 but dried deep, dark
 purple. H. A. Allard's grounds,
 3000-7th St. N.,
 Arlington, Arlington
 Va. Sept. 12, 1945
 H. A. Allard

11758 *Helianthus tuberosus* L.
 (7) 10-12 feet tall; flowers
 large, ornamental. but
 rhizomes small, elongated. Has
 persisted in my garden for 20 years from
 first plants introduced
 Sept. 22, 1945
 H. A. Allard

11759 African marigold
 (5) fl. yellow ditto

Petunia
 bl. fresh, dark red;
 drying dark purple.
 H.A. Allard's garden
 3000-7th St North,
 Arlington Co., Va
 Sept. 22, 1945
 H.A. Allard.

11760
 (2)

11761 ^{Moonvine}
Calonyction aculeatum House
 (18) forma *apetalum* Allard ditto
 from seedling progeny of original plant
 of last year. Ornamental; fl. with
 5 petals.

11762 *Chelone*
 (1) bl. deep pink.
 Roadside thicket
 at Thorofare Gap.
 Bull Run Mt.,
 Pond Mt., Va.,
 Fauquier Co.,
 Sept. 23, 1945
 H.A. Allard

11763 *Corallorhiza odoratissima*
 (several) in pine woods (Willd.) Nutt. ditto
 of Thorofare Gap in pasture one mile south
 of east of the New Baltimore highway.
 Huge colonies of this modest orchid were growing
 here, apparently having found a most favorable
 even its optimum habitat.

11764
 (1) *Eupatorium aromaticum* L ditto
 In thicket near # 11763 in
 open woods; frequent; fl. very white.

11765 *Oxalis*
 (1) Near old house (abandoned)
 near # 11764, in yard; ditto
 abundant

11766 *Leschea*
 (2) In dry open oak woods Bull Run Mt., Va
 on ridge just north of Fauquier Co.,
 Beresly Mill; frequent. Sept. 23, 1945
 H.A. Allard.

Quercus rubra L.
 emend. Du Roi Bull Run Mt., Va
 On ridge near # 11766 Sept. 23, 1945
 H.A. Allard.
 11767 (with very small acorns)
 (2)

11768 *Quercus rubra* L ditto
 emend. Du Roi
 Near # 11767.
 Acorns only - very large;
 leaves as in # 11767

11769 acorns from suffused hybrid ditto
Quercus alba x *Q. stellata*
 illus in The Vegetation and Floristics
 of Bull Run Mt., Va., by Allard & Leonard,
 page 27. See # for leaves.

11770 (2) Siberian Maple (int.) In H.A. Allard's yard
 Sept. 22, 1945 3000-7th St. North,
 Arlington Co.,
 Sept. 22, 1945

11771 *Solidago lablab* ditto
 (1) bl. lilac -
 (on my fence) Many volunteers
 from last year.

11772 *Lycopodium*
 (several) *hymniforme* In woods at west of
 on log. Massanutten mts.,
 east of Pughs Run, Shenandoah
 Co., east of Woodstock
 Sept. 29, 1945
 H.A. Allard

11773 *Large Yeaster* ditto
 (3) In same locality on forest floor.
 (found the
 two coffeeheads here)
 = Yeaster triplex Jungh. Note collar around
 show bearing portions

~~Aster laevis L.~~
~~Aster undulatus L.~~
bl. pale bluish lilac.

Massanutten Mt., Va.
Shenandoah Co.
Sept. 29, 1945
H.A. Allard

11774 On crest of ridge
just east of Pugh's Run
in dry, deciduous woods at 2500 ft.
Common
= Aster undulatus L.

11775 *Trichostema sitava*
ditto
on shale barrens
near foot of the above crest;
a typical shale barren plant.

11776 *Peltigera*
ditto
Lichen on shale barrens
near # 11775

11777 *Houstonia longifolia* Gaertn.
ditto
on shale barrens with #
11775; frequent here.

11778 Rock lichens
ditto
on rocks on rock slide near
crest of ridge east of Pugh's Run
on west slope; also on logs.
near 2500 feet

11779 *Lupulicaria pustulata*
ditto
on rocks near # 11778
same locality.

11780 *Panicum*
ditto
(2) on crest of ridge near # 11774

Aster laevis L. Massanutten Mt., Va.
Shenandoah Co.
Sept. 29, 1945
H.A. Allard
on shale barrens
on west slope of
ridge east of
Pugh's Run and Woodstock
(15) a common constituent here.

11782 Rock lichens
ditto
(2) on rocks near top of ridge
east of Pugh's Run and Woodstock,
on west slope at 2000 ft.

11783 *Paronychia fastigiata* (Raf.) Fern.
ditto
var. *typica* Fern.
on shale barrens near Fish
Hatcheries, near Pavells Farm
Shenandoah Co., Va. in
Massanutten Mts.
Sept. 30, 1945 H.A. Allard

11784 Norway maple
ditto
(2) (ornamental)
Acer platanoides
Near Woodstock, Va.
Shenandoah Co.,
in yard just off
highway 211,
Sept. 29, 1945
H.A. Allard

11785 *Opuntia humifusa* Raf.
ditto
on shale barrens near old Boyer
place, in pasture near Boyer's Spring.
Common here in full fruit.
No long spines.

11786 *Euonymus europaeus* L. C.W. Culpepper's
garden
Flowers greenish or yellowish
ornamental
4435 North Pershing
Arlington, Va.
Arlington Co., Va.
Sept. Oct. 1, 1945
H.A. Allard

11787 *Lycoris*
ditto
(3) Fl. crimson.

water plant in H.A. Allard's
fish pool. 3000-7th St. North,
Arlington, Va
Oct. 7, 1945
H.A. Allard

11788
(6)

11789 *Dentiana andrensi* Griseb.
In moist soil on wood road on
Backbone Mountain: sent down by
Bill Kramer, Forest Service, Davis, W. Va
Oct. 7, 1945. H.A. Allard
(For record as a poor specimen)

11790 Black Gum - black spots on young Bull Run Mt.
also myriophyllum trees. Prince William Co. Va.
on ridge just north of Bererly Mill. 22
October 14, 1945
H.A. Allard.
= *Septobasidium curtisii* (Boed.) Steiner.

11791 *Vernonia* rust. ditto
On plants just north of Bererly Mill,
1/4 mile, near road at foot of High Point ridge
Colosporium vernoniae Berk. & Curt.

11792 *Lycopodium germinatum* Batsch. ditto
In woods on
soil and leaves just east of
High Point.

11793 Small mushrooms ditto
on burned area below High Point
on east slope
Omphalia carneifera (Batsch) Quel.

11794 *Vaccinium* with black spots on ditto
leaves. just below High Point
on east slope.
= *Vaccinium vacillans* Kalme
= *Phytisma vaccinii* (Schw.) Torr.

Quercus rubra Bull Run Mt., Va
Fauquier Co.,

Leaves from the tree with large acorn collected Sept. 23, 1945 under the number 11768 and leaves with the tree compare acorns with the tree nearly under the number 11767.
Oct. 14, 1945
H.A. Allard

11796 *Rhododendron nudiflorum* (L.) Torr. ditto
Prince William Co.
(2) well down east slope; considerable bloom on the plants. at this late season, not as in spring before or with appearance of the leaves.

11797 Lichen - *Cladonia*. ditto
fruiting bodies creamy colored at foot of High Point ridge, east slope, on damp soil in old woodshed. Prince William Co.

11798 *Vernonia glauca* (L.) Willd. ditto
(3) stems and leaves with galls. at foot of east slope of High Point ridge, Fauquier Co., in open woods.

11799 Moss. ditto
(1) In moist soil of wood road near # 11798; very abundant. Prince William Co.

11800 *Aster tataricus* L. ditto
(2) In thicket near west slopes of Pond Mt. along highway 55 through Herofore Gap. Fauquier Co. Va.
Oct 21, 1945
H.A. Allard.

11801 *Enanthis hibernica* (L.) Salisb. ditto
H.A. Allard's garden where estab. Arlington Co. Va.
March 2, 1946.
fl. yellow.
one of earliest sp. flowering plants.

11802 Snow drop - small sp. H.A. Allard's garden
Fl. green and white, Arlington, Arl. Co., Va
March 2, 1946
H.A. Allard,

11803 Snow drop - large species
Leaves much broader.
Thirst plant to flowers.
Fl. white with green spot at
base of corolla segments.
March 2, 1946

11804 Moss -
" on soil
Pond Mt., Va.,
March 23, 1946
H.A. Allard
In pasture just south
of Thoro fare Gap, on soil

11805 Claytonia virginica
" ditto
along Broad Run in
blood plain 1/2 mile south
of Thoro fare Gap.
11806 Nepeta hederacea with
11805 ditto

11807 Stellaria media
on steep bank in woods
one mile S. of Thoro fare
Gap, along Broad Run.
ditto

11808 Moss on log along
Broad Run just 1/2 mile
south of Thoro fare Gap.
ditto

Pond Mt., Va.
South of Thoro fare Gap
along Broad Run
11809 Poa cuspidata Nutt
one ~~1/2~~ mile - near
Triassic conglomerate outcrop.
March 23, 1946

11810 Moss
on bank near # 11809 ditto

11811 Hepatica americana (DC) Ker.
along ~~wooded bank~~ of Broad Run ditto
1/2 mile south of Thoro fare Gap.
fl. white & several colored
among the blue.

11812 Polystichum abrotanoides
+ incisum on wooded bank ditto
one mile south of Thoro fare Gap
on Broad Run.

11813 Moss
On rotten log near # 11812 ditto

11814 Nepeta
along Broad Run
2 miles south of Thoro fare Gap.
date = ^{same locality} April 6, 1946

11815 Gnaphalium
on east slope Pond Mt., Va
near Thoro fare Gap, and east of
New Baltimore Highway.
ditto

Viola
bl. Pur
11816

East slope Pond Mt.
just south of Thorofare Gap
in dry pasture. April 6, 1946
H.A. Allard

11817 Xanthi Turkish tobacco
Sown in greenhouse, Belterville,
2-18-46. Picked 4-12-46, 21-22
days old.
H.A. Allard.

11818 *Muscovida*.
in old field
west slope, below Castello's property, abundant;
fragrant.
Bull Run Mt., Va
North of Hoperell Gap
April 14, 1946
H.A. Allard.

11819 *Cyst. affle* in pasture
(2) near # 11818; full bloom. ditto

11820 wild *Phlox*.
(2) in pasture near # 11819 ditto
1/2 mile north of Hoperell Gap, west slope.
Full bloom.

11821 *Wisteria*.
(3) at old house at foot of Harvis's
lane 2 miles north of Hoperell Gap,
west slope. Full bloom.
Fl. purplish blue ditto

11822
(3) *Lycium halimifolium*
with # 11821, same yard. ditto
bl. purplish.

Double yellow
Narcissus
in yard of
old house with
11821.
west slope of Bull Run Mt. Va
North of Hoperell Gap 2 miles
April 14, 1946
H.A. Allard

11824 Lilac.
(3) in yard with # 11821 ditto
fl. lilac purple.

11825 *Pop.*
(1) in Harvis's yard - west slope ditto
2 miles north of Hoperell Gap
From top tree 60 years old, 30 feet
tall.

11826 *Ceanothus*
(4) *mutans* Raf East of New Baltimore road.
in swampy woods on bank of brook, in woods
near Baltimore highway; frequent
Pond Mt. area
south of Thorofare Gap
April 26, 1946
H.A. Allard.

11827 *Luzula*
(1) with # 11826 ditto

11828 *Carex*.
in woods near Broad Run
south of Thorofare Gap 2 miles, east
of New Baltimore highway. ditto

11829 *Ranunculus nemorosus* Poir
(1) woods with # 11828. ditto
toxicus.

Cardamine bulbosa Pond Mt. area, east slope, south of Thoroughfare (Scrib) BSP. 2 miles. April 26, 1946
 11830 red soil along bank near Broad Run
 2/ east of New Baltimore highway, abundant here; attractive
 H.A. Allard

11831 *Cerastium vulgatum* var. *hirsutum* Tringe
 Old field south of Thoroughfare Gap 1/2 mile, east of New Baltimore highway, common ditto

11832 *Silene caroliniana* Walt. sub. of *pernyi* (Michx.) Clamens ditto
 East slope at crest of cliffs 1 mile south of Thoroughfare Gap, Fl. pink

11833 *Carex* In woods, east slope, 1 mile south of Thoroughfare Gap, east slope near cliffs ditto

11834 *Ranunculus hispidus* Michx. ditto
 1/1 west slope well up, about 1/2 mile south of Thoroughfare Gap: full bloom. In damp soil. Common
 Petals bright yellow

11835 *Mercurialis alabamensis* Gray From C.W. Culpepper's grounds 4435 North Pershing Drive, Arlington, Va April 30, 1946

11836 *Phlox* bl. white From C.W. Culpepper's grounds ditto

Pond Mt. area east slope April 26, 1946 H.A. Allard
 Ant on leaves of *Theracium venabum*
 In woods east slope of Pond Mt., east of New Baltimore highway, 1/2 mile S. of Thoroughfare Gap April 26, 1946
 = *Pyrausta grisea* Arthur H.A. Allard
 rare; more from Va; says John A. Sturtevant

11838 *Asculus paria* From C.W. Culpepper's grounds 4435 North Pershing Drive, Arlington, Va May 2, 1946
 bl. red. (6)
 H.A. Allard

11839 *Rolobutya* 4 fl. pink, shrub. ditto

11840 sweet shrub. Pond Mt. area 2/1 bl. dark red, south of Thoroughfare Gap 2 miles, May 14, 1946
 Sunning at old house site in woods, east slope New W area.
 H.A. Allard

11841 *Marrubium* bl. white with 11840 ditto
 new to area

11842 *Carex* 3/1 along open wood road near # 11840

11843 *Azalea* bl. pink 14/1 just south of Thoroughfare Gap, east slope of Pond Mt., May 4, 1946. H.A. Allard ditto

Oxalis
fl. yellow. On lawns,
11844
3
Horticultural Station,
Beltsville, Md
May 7, 1946
H.A. Allard.

11845 Geranium
(1) On lawns and around
buildings; fl. pinkish purple.
ditto

11846 Carex.
(1)
Pond Mt., Va
west slope 1/2 mile
south of Thorough Gap,
in woods. May 11, 1946
H.A. Allard.

11847 Carex
(1) Near # 11846
ditto

11848 Scutellaria
(2) fl. blue-purple, strong.
Perennial; very showy.
Large colony 1/2 mile south of Thorough Gap
on Pond Mt., west slope in thin
open woods
ditto

11849 Carex
(1) with 11848
ditto

11850 Pteris polytaenoides
(1) with 11848
Lower pyramidal
made sharp angle
ditto

Amelanchier
Berries green.
11851
121
at cliffs on Pond Mt.,
south of Thorough Gap
1 mile, May 11, 1946
H.A. Allard.

11852 Siringium
(1) fl. blue.
Roadside just
above Berkeley Mill
by roadside, May 11, 1946
H.A. Allard

11853 Oxalis
(3) on lawn
near building.
Beltsville, Md.
Hort. Station
May 16, 1946
H.A. Allard

11854 Oxalis
(1) Near # 11853
ditto

11855 Carex
(1) Carex in woods,
east slope 2 miles S. of
Thorough Gap.
Pond Mt., Va
Fauquier Co.
May 25, 1946
H.A. Allard

11856 Galium aparine
(1) In swamp woods S. of
Thorough Gap 2 mi., near Broad Run.
ditto

11857 Viola
(1) yellow fl.; capsules woolly
In swamp woods near # 11856
ditto

Carex
In low ground along
Broad Run
11858 south of Therefore
(1) 1/2 mile
Pond Mt., Va
Fauquier Co., Ga
south of Therefore
May 25, 1946
H.A. Allard

11859 Houstonia missouriensis
(2) var. pubescens ditto
In open field south of Therefore 1/2
mile east of New Baltimore highway.

11860 Sisyrinchium graminoides
In dry woods 2 miles S of
Therefore 1/2 mile east of New Baltimore highway. ditto

11861 Euphorbia amurensis
(2) In dry woods edge field 1 mile
south of Therefore 1/2 mile east of New
Baltimore highway. ditto

11862 Tris versicolor
(3) In ^{open} swale 1/4 mile south of
Therefore 1/2 mile east of Broad Run,
New to area. ditto

11863 Convolvulus spithameus L
(1) on dry bank east of Therefore 1/2
1/4 mile along highway 55, stony here.
Prince William Co. ditto

11864 Carex
(1) In woods, east slope 1 mile
south of Therefore 1/2 mile, Fauquier Co ditto

Carex crinita
In ditch at Therefore 1/2 mile
11865 just west of
Bourley Mill. (New to area)
Pond Mt., Va
Fauquier Co.
May 25, 1946
H.A. Allard

11866 Carex By roadside near
(3) # 11865 ditto

11867 Grass
In woods 2 miles S. of Therefore 1/2
near Broad Run. ditto

11868 Oenothera
(2) In woods S. of Therefore 1/2
1 1/2 mile road east of New Baltimore
highway. ditto

11869 Mildew covering leaves, stems,
inflorescence of Cynoglossum virginianum L.
East slope of Pond Mt., in woods
2 miles S. of Therefore 1/2 mile, near crest. ditto

11870 Viola
Not in flower
In heavy woods, damp soil on
Barkbone Mt at 3500 ft. Not in H.A. Allard
Says region
Fauquier Co., Va
May 31, 1946

11871 Carex
Near sand pit at
Thomas, on road near
3500 ft., in dry soil. ditto

Shrub
dry damp, shaded
woods near cave pit
beyond Thomas
11872
Tucker Co., W. Va.
May 31.
In Davis region,
Tucker Co., W. Va.
May 31, 1946
H.A. Allard

11873 Carex
On sandstone cliffs
near Thomas, Tucker Co., W. Va.,
in dry soil. at 3400 ft ditto

11874 Trillium undulatum Willd
In rich woods near # 11873
petals white with pink or reddish
lines at base ditto

11875 Clintonia borealis (L.) Raf.
In woods near # 11873
bl. yellowish ditto

11876 Ajacae
In wet soil near Davis
Tucker Co., W. Va. at 3200 ft ditto

11877 Viola
fl. blue, in damp soil by roadside
in woods on Backbone Mt., near
Thomas at 3700 ft. ditto

11878 Carex
In woods in damp soil on
Backbone Mt., W. Va., at 3700 ft
near Thomas, Tucker Co. ditto

Viola canadensis
Petals decidedly purplish.
In damp soil in woods
11879 on Backbone Mt., Tucker Co., W. Va.
near Thomas at 3700 ft
Near Davis, W. Va.
Tucker Co., May 31, 1946
H.A. Allard

11880 Viola
fl. blue
In deep woods on Backbone Mt.,
Tucker Co., W. Va., at 3700 ft
near Thomas. ditto

11881 Carex
Near Tank Stream near
Blackwater River, opposite
Davis, Tucker Co., W. Va., at 3200 ft
June 1, 1946 ditto

11882 Viola blanda Willd
On mossy banks at stream south
of Tank Stream opposite Davis, Tucker
Co., W. Va., June 1, 1946 ditto

11883 Carex
bl. white, striped,
near 11881 May 31, 1946

11884 Carex
Near 11881 on Tank Stream May 30, 1946

11885 Clintonia umbellulata (Michx.) Moxing
On Backbone Mt., near # 11875
in rich woods. From together
bl. white, with green spots
May 31, 1946 ditto

Viola blanda (Pursh)
On ~~bank~~ ^{in woods} ~~bank~~ ^{in woods} ~~bank~~ ^{in woods}
11886 near Thomas, at 3500 ft.
Near Davis, Tucker Co.,
W. Va., May 31, 1946
H.A. Allard

11887 ornamental
fl. white. In yard at
Davis, Tucker Co., W. Va., at
3200 ft. June 1, 1946
stellaria 2 ditto
Very showy in borders here

11888 *Ranunculus acris* L
(2) *Erythronium* in lawns, pastures at
Davis, Tucker Co., W. Va., at 3200 ft.
June 1, 1946. yellow the ditto
fields and gardens.

11889 *Hieracium*
(1) *happus* L.
On shales on route 50, beyond
Romney, W. Va., on Allegheny front, ditto
May 30, 1946. June 1, 1946

11890 *Viola*
(1) fl. blue.
near Thomas, Tucker Co., W. Va.
at 3500 ft. In wet soil. May 30, 1946 ditto

11891 *Viola blanda*
(1) fl. purplish
On Backbone Mt., near Thomas,
Tucker Co., W. Va. at 3500 ft.
May 30, 1946 ditto

11892 *Saxifraga micranthidiflora*
(2) on banks with # 11891. ditto
fl. whitish. (Hors.) Britton
June 1, 1946
H.A. Allard

Penstemon
Rust on leaves. On shales Tucker Co., W. Va.,
on Allegheny front, on May 30, 1946
11893 route 50, beyond H.A. Allard,
Romney, W. Va.
fl. lilac purple.
Very showy, abundant.

11894 *Stellaria ~~reginae~~ borealis* Bigel.
(1) at bridge near Blackwater River ditto
in damp soil. at Davis, Tucker Co.,
W. Va., at 3200 ft. May 31, 1946
var. *isophylla* Torr. near to W. Va.

11895 *Carex*
(1) In wet soil near # 11894 ditto
May 31, 1946

11896 *Carex*
(1) at mill ruins on Blackwater ditto
River at Davis, W. Va., Tucker Co.,
at 3200 ft. In wet soil. May 31, 1946

11897 *Carex crinita*
(3) with # 11896 ditto
In wet soil. May 31, 1946

11898 *Hieracium pratense* Tausch
On shales on Allegheny front, on
route 50, beyond Romney, W. Va. ditto

11899 Exceedingly abundant, and a
herb.
Tiarella cordifolia L.
On moist banks on Backbone Mt.,
Tucker Co., W. Va. June 1, 1946 ditto
H.A. Allard

Blaphilia ciliata On alders, 7 ft. tall
On scales on Route 50,
beyond Romney, W. Va.
11900 May 30, 1946
(1) fl. purplish-blue
H.A. Allard

shony

11901 Carex
(1) Near Tank Steadman, across the
Blackwater River from Davis,
Tucker Co., W. Va., May 30, 1946,
at 3200 ft. ditto

11902 *Houstonia scopyllifolia*
Near # 11901
fl. blue. ditto

11903 *Trientalis americana* (Pers.) Pursh
on damp field in woods with # 11901.
fl. white. ditto

11904 *Euonymus atropurpureus*
(3) From C. W. Culpepper's grounds
4435 North Pershing Drive, Arlington,
Arlington Co., W. Va., May 29, 1946

11905 fl. slightly purple
H.A. Allard
(1) *Penstemon*
fl. white ditto June 5, 1946
H.A. Allard

11906 *Penstemon*
fl. lilac. ditto June 5, 1946
H.A. Allard

Carex. On H.A. Allard's grounds,
3000 - 7th St. North, Arlington, Va.
June 10, 1946. H.A. Allard
11907 (4)

11908 *Panicum* North of Haverell Gap,
Fauquier Co., Bell Run
int., Va. June 15, 1946
(1) Roadside bank west slope. H.A. Allard
1 1/2 mi. N. of Haverell Gap. ditto

11909 Carex
(3) Near # 11908, on roadside bank. ditto

11910 Carex
(1) In woods near Harris place
1 1/2 mi. North of Haverell Gap. ditto

11911 *Hieracium venosum*
(2) on Harris's wood road
near # 11910 ditto

11912 Carex
(2) In small 1 1/2 miles N.
of Haverell Gap. ditto

11913 *Vitis labrusca*
(2) Near vacant house 1 1/2 mi.
N. of Haverell Gap. ditto

Carex.
1 1/2 miles N. of Hoperell Gap
11914 in meadow of Hoperell Gap.
(1) June 15, 1946
H.A. Allard

Bull Run Mt., Va
Franklin Co.,
west slope, north
of Hoperell Gap.

11915 Carex.
(2) In swale near # 11914 ditto

11916 Carex
(1) Meadow near haystack ditto
near # 11914

11917 Juncus
(1) Near # 11914. ditto

11918 Juncus
(3) sub soil near # 11914 ditto

11919 Carex.
(1) Low ground near 11914 ditto

11920 Mildew on Galium
of same # Near # 11914 ditto
(1) Kills plants, or makes them
unhealthy,

Physalis pubescens
In old field with west slope north of
11921 of Hoperell Gap
(2) 1 1/2 miles.
June 15, 1946
H.A. Allard

Bull Run Mt., Va
Franklin Co.,
west slope north of
Hoperell Gap.

11922 Oxalis
(1) In old field just N. of ditto
Hoperell Gap.

11923 Fragaria
(2) In low woods just N. of ditto
Hoperell Gap.

11924 Verbena simplex (V. angustifolia)
(1) In old field near # 11923 ditto
subsequent.

11925 Oxalis
with # 11924 - abundant ditto

11926 Oxalis
fragile appearing
with # 11924. abundant, ditto

11927 Rust spots on leaves of
Sisyrinchium biflora, ditto
(1) In thickets, 1 mile N. of
Hoperell Gap. Of spring
occurrence,

Carex
In swale just
11928 North of
(1) Hoperell Gap, Bull Run Mt., Va
Fauquier Co.
west slope north of
Hoperell Gap.
June 15, 1946
H.A. Allard

11929 Carex
(2) with # 11928 ditto

11930 Carex
(3) with # 11928 ditto

11931 Salix
(1) In red soil with # 11928 ditto

11932 Eleocharis
In red soil with 11928 ditto

11933 Juncus
(1) In red soil with # 11928 ditto

11934 Oxalis
In old field just N. of ditto
Hoperell Gap; abundant.
A tall species

Oxalis
with # 11934
11935 abundant ditto
(1) but not as tall, rd grayish in color.
Bull Run Mt., Va
Fauquier Co.
west slope north of
Hoperell Gap.
June 15, 1946
H.A. Allard

11936 Oxalis
(1) with # 11934; abundant ditto
swallest in stature of all
here which are in this category.
intermingled in great profusion

11937 Scirpus
(3) In red soil at Hoperell Gap ditto.
11937

11938 Juncus
(2) with # 11937 ditto

11939 Carex
(2) In red soil with 11937 ditto

11940 Leaves of Hibiscus militaris
(1) at H.A. Allard's grounds, ditto
3000-7th St. North
Arlington, Va (with most
visitors)

11941 Juncus
(1) In red soil at ^{Bull Run Mt., Va} ~~therefore~~ Gap ditto
June 23, 1946
H.A. Allard

Hemichera

Pond ~~Bull Run~~ Mt., Va
Fauquier Co.,
~~west slope~~ south of 23
Thoro fare Gap, June 23, 1946
H.A. Allard.

11942

(1)

on cliffs, 1 mile S. of
Thoro fare Gap

11943

(1)

Clematis in woods
on west slope, 1 mile S. of
Thoro fare Gap. ditto

11944

(2)

Sutellaria
in woods west slope
1 mile S. of Thoro fare Gap. ditto

11945

(2)

Stironema
in moist soil in road road
at west gap S. of Thoro fare Gap,
2 miles. ditto

11946

(1)

Verbena simplex
in pasture east slope
1 mile S. of Thoro fare Gap,
west of New Baltimore highway. ditto

11947

(1)

In woods east slope
1 mile S. of Thoro fare Gap
east of New Baltimore highway
Panicum ditto

11948

Panicum
Near # 11947 in woods, ditto

Leonurus

Pond ~~Bull Run~~ Mt., Va
Fauquier Co.
west slope south of
Thoro fare Gap, 6/23/46
H.A. Allard

cardiaca

11949

(1)

around old
house site 1 mile
S. of Thoro fare Gap, east of New
Baltimore highway.

11950

(2)

Physalis ditto
with # 11949 in
same ground

11951

(4)

Elymus ditto
in moist woods east of
New Baltimore highway, 1 mile
S of Thoro fare Gap, east slope

11952

(1)

Smilax ditto
in moist woods near
woods with # 11951. High
climbing

11953

(1)

Panicum ditto
in damp woods with
11952

11954

(1)

Sylasanthus ditto
in dry pasture just S.
of Thoro fare Gap east of
New Baltimore highway on Hog Back

11955

(4)

Hydrangea quercifolia ditto
on C.W. Culpepper's grounds
4435 N. Pershing Drive,
Arlington, Arlington Co., Va
June 25, 1946. H.A. Allard

Seed coll. from 2 fruits of Solanum
 with dry orange-yellow fruits size large grapes
 1" - 1 1/2" in dia. Plant 3-4 ft tall; all parts
 11956 very prickly - fruit crimson red.
 (seeds only) Coll. by Howard F. Allard
 May 8, 1946 on trail to Piedra Blanca
 Km 74. Dominican Republic W.I.

11957 From 4 fruits from same plant
 (Tomato seed) coll. in Piedra Blanca
 wild. April 13, 1946. This is the
 larger fruit in the photos
 #2. Collected by H. F. Allard

11958 (Tomato seed) Coll. by H. F. Allard from
 one plant April 12, 1946
 wild. Small red cherry type
 Seed of 11 plants fruits, coll.
 at Piedra Blanca, wild plants.
 Dominican Republic.

11959 Linum Pond Mt., Va
 Fauquier Co. July 4, 1946
 2 miles S. of Thoroughfare Gap
 on top of ridge H. F. Allard

11960 Galium (1)
 with # 11959
 in dry open woods ditto

11961 Umbellifer (3)
 In saddle 3 miles S of
 Thoroughfare Gap, on east slope
 east of New Baltimore highway ditto

11962 Vitis labrusca
 3 miles S. of Thoroughfare Gap
 on east slope, ditto

Leskea Pond Mt., Va
 Fauquier Co. July 4, 1946
 on top of dry wooded ridge 2
 miles S. of Thoroughfare Gap.
 H. F. Allard

11963 (1)
 Edge of old field in
 thicket near 11961 ditto

11965 Hypericum
 In thicket near 11961 ditto

11966 Gramineae
 In damp low ground thicket,
 one mile S. of Thoroughfare Gap,
 Fauquier Co., Va. east of New
 Baltimore Pike ditto

11967 (3)
 Mint. Thicket one mile S.
 of Thoroughfare Gap east of New
 Baltimore Highway; fl. pale
 whitish. ditto

11968 Sedg
 with 11966 - damp thicket ditto

11969 Ruellia (3)
 with # 11966 ditto

Hypericum
In pasture 1/2 mile Pond Mt. Va
S. of Thoroughfare Gap, Fauquier Co
July 4, 1946
11970 east of New Baltimore highway.
H.A. Allard

11971 Cyperus
In dry pasture small just
S. of Thoroughfare Gap, east of New
Baltimore highway ditto

11972 Cyperus
globose heads. ditto
with # 11971

11973 Scirpus.
(4) At Thoroughfare Gap, Va
Bull Run Mt., July 4, 1946 ditto
In water & mud

11974
In swale west slope
just S. of Thoroughfare Gap,
bl. or bright pink, very
showy. 3-3 1/2 ft high. Perennial.
Pond Mt., Va
Fauquier Co.,
July 7, 1946
H.A. Allard

11975 Spiraea,
(2) ditto
with # 11974; just in flower.

11976 Mint
(2) ditto
with 11974
bl. whitish

west slope Pond Mt., Va
Fauquier Co.
July 7, 1946
H.A. Allard

11977
(2) In swale with
11974

11978 Allium commune
in flower, ditto
In swale with # 11974

11979
(3) Fern, in swale with # 11974 ditto

11980 Thalictrum
(4) In swale with 11974 ditto

11981 Pentstemon
In swale with 11974 ditto
fl. white,

11982 Vitis labrusca
(3) ditto
in thickets 1 mile S. of
Thoroughfare Gap - west slope.

11983 Pteridium
In pasture near # 11982
curled fronds

Lunobolus Pond Mt., Va
11984, 1/2 miles S. of Therefore Gap, Va
(2) fl. white, on old field slope
Trailing July 7, 1946
H.A. Allard

11985 *Impatiens leucanthemum*
(4) var. *pinnatifidum* ditto
In old field 1/2 miles S of
Therefore Gap; full bloom

11986 *Oxalis*
(1) very pubescent.
with # 11985 ditto

11987 small fl. *Soraria*
(1) In pasture at old house site
1/2 miles S. of Therefore Gap. ditto

11988 *Shorea*
(1) In low ground 1/2 miles
S. of Therefore Gap, near
11987 ditto

11989 *Verbena*
(1) white fl. Near # 11987
In pasture ditto

11990 *Thalictrum*
(3) In pasture near
11987 ditto

Sutellaria West slope Pond Mt., Va
Edge of woods Franquier Co., Va
11991 1/2 miles S. of Therefore Gap, Va
July 7, 1946
H.A. Allard

11992 *Rudbeckia*
(1) In pasture 1/2 miles
S. of Therefore Gap, near
11987 ditto

11993 *Prinos Ligustrum*
(3) Shrub white fl. Roadside near
Centerville ditto

11994 Chinese Elm
(2) at Boreley Mill, Bull Run Int., Va
Therefore Gap, Va
Franquier Co.
July 14, 1946
H.A. Allard

11995 *Mint*
(3) at west end of gap,
by road side, fl light pink, ditto

11996 *Galium*
(1) In wet soil by roadside ditto

11997 *Agrostis* West slope Pond Mt., Va
(2) near Therefore Gap 1 mi
meadow July 14, 1946 H.A. Allard
Franquier Co.

Linum
In pasture west slope, Pond Mt. area,
11998 1 mile Va., July 14, 1946
(1) S. of Thoro fare Gap, H.A. Allard

11999 Asclepias
(2) fl. purplish red, ditto
In swale 2 miles S. of
Thoro fare Gap.

12000 Physalis
(3) Near # 11999 at old
house site, in upland ditto
pasture

12001 Saniacela
(2) In pasture ditto
near # 12000

12002 Scrophularia
(1) at Thoro fare Gap in July 14, 1946
roadside thicket. H.A. Allard

12003 Sabatia angulata
(1) Near # 12002, in
damp soil; fl. pink, showy

12004 Cephalanthus occidentalis
(1) In wet soil near # 12002

Sphagnum in On wet banks at
Thoro fare Gap, Bull Run
12005 Mt. Va., Tangier Co.,
July 14, 1946. H.A. Allard
(10) Certain areas in print; others
contiguous wet, fruiting very heavily in
spots.

12006 Juncus. Bull Run Mt., Va.,
(1) In ditch and wet soil July 20, 1946
at Thoro fare Gap, Tangier Co.,
H.A. Allard

12007 Grass
(3) Near # 12006, in ditto
wet soil

12008 Rhynchospora
(3) In ditch near # 12006 ditto

12009 Linum
(1) Road side bank near # 12006 ditto

12010 Sericocarpus linifolius
(3) On dry, stony bog bank east ditto
of New Baltimore highway and S. of
Thoro fare Gap 1/4 mile

12011 Hydrangea abarascens
(1) Thoro fare Gap, in thicket ditto
along highway.

Sisyrinchium validum Vahl Bull Run Mt., Va
In moist soil water along
highway, Therefore Gap, Tangier Co., Va
July 20, 1946 H.A. Allard
12012 (1) H.A. Allard, Local

12013 *Cyperus*
(2) In red soil near roadside, ditto
near # 12012 near slope Pond Mt., Va

12014 In Allard's pool,
(3) 3000-7th St. North, Arlington, Va
July 21, 1946 H.A. Allard
Fl. white 15-ray-like above

12015 In water. Full bloom,
(2) *Salvinia* Near Therefore Gap
on west slope of Pond Mt., Va
just south of Tangier Co.

12016 *Juncus*
(1) *Adiantum*
In pasture near # 12015 ditto

12017 *Paricum*
(1) In swale with # 12015 ditto

12018 *Habenaria*
(1) In low, wet swale with
12015; fl. purplish pink
or magenta very showy ditto

Thalictrum west slope Pond Mt.,
Tangier Co., Va
July 27, 1946
12019 # 12015 H.A. Allard
(1) just S. of Therefore Gap

12020 *Blatta* grass leaves
(1) with stalks, ditto
In swale with # 12015

12021 *Alicama subcordatum* Raf. ditto
(1) In swale with # 12015.
Not common in area.

12022 *Juncus*
(1) In pasture near 12015 ditto

12023 *Hydrocotyle americana* L. ditto
(2) In wooded swamp, west slope
Pond Mt., Va Tangier Co., just
S. of Therefore Gap.

12024 *Fern*
(2) In same wooded swamp ditto
with # 12023

12025 *Sagittaria*
(2) In bog, west slope Pond Mt., ditto
1/2 mile S. of Therefore Gap.

Vitis

Pond Mt., Fauquier Co., Va., west slope, near Therefore Gap, July 27, 1946
H.A. Allard
In woods near Therefore Gap.

12026
(3)

12027 Harkelia virginiana (L.)

(4) In woods west slope of Pond Mt., Johnson
just S. of Therefore Gap. ditto

12028 Mildew on leaves of
Verberna stricta folia L.

(1) In pasture S. of Therefore Gap about 1/2 mile ditto

12029 Mint

(2) In swale just S. of Therefore Gap. ditto

12030 Galium

(3) with 12029 ditto

12031 Asclepias pulchra Ehrh.

(2) In swale with # 12029 ditto

12032 Spiraea salicifolia L.

(3) In swale with # 12029 ditto

Elodea canadensis Michx.

In Allard's large fish pond, 3000-7th St N., Arlington, Va. (14) full bloom; pl. elevated above water 2'-3 inches usually, closing to some extent at night.

12034 Has never bloomed before in 7-8 years, July 27, 1946.

(3) In woods East slope of Pond Mt., Fauquier Co., Va. South of Therefore Gap 1/2 mile Aug. 4, 1946
H.A. Allard.

12035 Dryopteris polypodioides

(2) Scum plarum? In meadow east slope Pond Mt., Fauquier Co., Va. just S. of Therefore Gap. ditto

12036 Eupatorium purpureum

(1) In swale near # 12035 ditto

12037 Sabatia angularis (L.) Pursh

(3) In swale with # 12035; very showy, abundant here. ditto

12038 Spiraea salicifolia L.

(3) In swale with # 12035 ditto

12039 Elodea canadensis Michx.

(6) From Allard's fish pond as for # 12033. Aug. 11, 1946
H.A. Allard

Veronica virginica L. Tucker Co., W. Va.,
Aug. 17, 1946.
Roadside between Thomas and Red House
12040 Aug. 17, 1946. H.A. Allard.
very showy, 6 ft tall; fl. white.
(3) Infrequent in this area.
= Culver's Root, at 3000 ft.

12041 *Chelone*; fl. white to pinkish.
(1) across Blackwater River from
Daisy, Tucker Co., W. Va., at 3200
ft., Aug. 17, 1946, / H.A. Allard

12042 *Eupatorium purpureum* L.
(2) ditto
Aug. 19, 1946
4-5 ft. tall. Near pulp mill ruins
near bridge.

12043 *Edinocystis lobata* (Michx.) F. & G.
(3) Aug. 19, 1946.
In thicket along Blackwater River
near bridge, at Daisy, Tucker Co., W. Va.
Frequent. H.A. Allard.

12044 *Ceanothus americanus* L.
(1) across River (Blackwater) from Daisy,
Tucker Co., W. Va. Aug. 19, 1946.
H.A. Allard at 3200 ft

12045 *Aster umbellatus* Mill.
(1) with # 12044. Aug. 19, 1946
Exceedingly common. H.A. Allard.
The commonest aster in the region.

12046 *Lycopodium tristachyum* Pursh.
(1) In spruce forest near Tank
stream across Blackwater River
from Daisy, Tucker Co., W. Va.,
Aug. 19, 1946. H.A. Allard.

across Blackwater River from
Daisy in open meadow, at 3200 ft.,
Tucker Co., W. Va. Aug. 19, 1946

12047 H.A. Allard
(1) a very common species everywhere
in the region to tops of
Alleghenies 4000 ft or higher.

Solidago

12048 *Epilobium angustifolium* L.
(1) with # 12047. Very common
in region - showy. Aug. 19, 1946
H.A. Allard.

12049 *Chelone*
(1) fl. white to pinkish. ditto
In damp soil near # 12048

12050 willow (*Salix*)
(3) In cold, wet mountain bog
in Monongahela National Forest
near Douglas, Tucker Co., W. Va.,
Aug. 20, 1946, near 3200 ft.
H.A. Allard

12051 Black fungus spots on
(3) *Nemophyllus mucronata* (L.) Thel.
very abundant. with # 12050
Aug. 20, 1946.

12052 *Arctium minus* Bernh.
(1) at old house site on Backbone Mt.,
Tucker Co., W. Va., at 3552 ft.
The elevation given here!

12053 *Salix*
(2) on road between Thomas and
Parsons, Aug. 20, 1946. H.A. Allard
with # 12052.

at bridge over Blackwater
River, at Davis, Tucker Co., W. Va.,
aug. 20, 1946. H.A. Allard,
12054 at 3200 ft.
(21) Galium afarum.

12055 Rhynchospora
(31) (with smut) In cold, wet mountain
bog near Douglas, Tucker Co., W. Va.,
at 3400 ft., very abundant here.
aug. 20, 1946. H.A. Allard

12056 Vaccinium oxycoccus L.
with # 12055, abundant here.

12057 Polygonum sagittatum L.
(1) at bridge over Blackwater River
at Davis, Tucker Co., W. Va.,
aug. 20, 1946. H.A. Allard

12058 Spiraea
(1) at bridge with 12057 ditto

12059 Chelone
(1) fl. white or pinkish. ditto
with # 12055.

12060 Topus canadensis Marsh
(3) In bog with 12055. ditto.

Solidago leaves with rust.
In bog with 12055.
= 5.

12061
(Several)

12062 Panicum
(1) along highway near bog
where # 12055 grew.
aug. 20, 1946.
H.A. Allard.

12063 Cladonia
(Several) In bog with 12055

12064 Trosera rotundifolia L.
In bog with # 12055

12065 Confronte: fl. whitish.
Cult. in yard at Davis, Tucker Co.,
W. Va., at 3200 ft. aug. 20, 1946
grown by Mrs. Clark H.A. Allard
who moved to Elkins as school
librarian in high school here.

12066 Polytrichum vulgare L.
(1) On cliffs of Caraan Mountain,
Tucker Co., W. Va., 3 miles N.E. of
Davis, aug. 21, 1946. H.A. Allard

12067 Caryophyllaceae
(1) near 3500 ft.
In garden (cult.) at Davis
Tucker Co., W. Va.; at Mrs. Clark's.
aug. 21, 1946. H.A. Allard

Mass
On ledges at top of Canaan Mt.,
Tucker Co., W. Va. 3 miles N.E. of Davis.
12068 Aug. 21, 1946. H.A. Allard,
" " near 3500 ft.

Rubbeckia
12069 Cult. in flower gardens at
" Davis, Tucker Co., W. Va.
Aug. 21, 1946. H.A. Allard

12070 Fungi on *Pteris aquilina* L
In pasture at Davis, Tucker Co.,
W. Va., Aug. 21, 1946. H.A. Allard
just across Blackwater River at

12071 ~~See Pumping Plant~~
" Composite at alt. of 3200 ft.
In flower gardens at Davis
W. Va. ditto

12072 *Lycopodium*
" ditto near 12068

12073 " Moss on ledges with
" " 12072

12074 Moss
" " Near # 12072.

Fern. On ledges of Canaan Mt., top.
Tucker Co., W. Va., Aug. 21, 1946
H.A. Allard, at 3500 ft.

12075 Common
" " 3 miles N.E. of Davis

Mosses
12076 with # 12075 ditto
" "

Sphagnum
12077 near top of Canaan
" " mt. in brook near 3400 ft. ditto

12078 Mosses on submerged rocks
" " in brook near # 12077 ditto

Moss
12079 near # 12075 ditto
" "

Hepaticae
12080 near # 12075 ditto
" "

Mosses
12081 near 12075 ditto
" " On ledges

Moss - On top of ledges of Canaan Mt.,
Tucker Co., W. Va., 3500 ft.,
3 miles N. E. of Davis.

12082 Aug. 21, 1946. H.A. Allard
" "

12083 Moss with # 12082 ditto
" "

12084 Moss in damp soil with 12077 ditto
" "

12085 Carex with 12070
" "

12086 ^{blower} in garden at Davis, Tucker Co.,
" W. Va., Aug. 21, 1946.
H.A. Allard
at Mrs. Clark's at 3200 ft.
fl. blue.

12087 *Lycodium tristachyum*
" on top of Backbone mt., Tucker Co.,
W. Va., Aug. 22, 1946. H.A. Allard,
near 3600 ft.

12088 *Lycodium* ditto
" near # 12087

Habenaria cristata

fl. orange, very showy. A colony
near fire tower on Backbone Mt.,
Tucker Co., W. Va. Aug. 22, 1946.

12089 H.A. Allard. Infrequent in
" area. Mr. Bill Kramer in
the Forestry Dept. had not
found this colony. In full
flower.

12090 (2) Lichen on ledges near
fire tower near 12089 ditto

12091 *umbilicaria* ditto
" with # 12090
Lichen.

12092 Moss on ledges with # 12090 ditto
" "

12093 *Vaccinium*
fruit with heavy bloom
on Dolly Sods Mt., Tucker Co., W. Va.,
" near 4000 ft., Aug. 23, 1946.
2-2 1/2 ft. about H.A. Allard.

12094 *Menziesia pilosa* (Michx.) Pers. ditto
" near # 12093. Common.

12095 *Vaccinium* very low bush;
fruit black, soft, sweet. ditto
" with # 12093 - 8-10 in tall.
without bloom,

On Dolly Sods Mountain, Tucker Co., W. Va., near 4000 ft., in masses etc., along trails; fl. whitish, Aug. 23, 1946.
 12096 H.A. Allard, slender, nearly impregnet, leafless.

12097 Lichens on Pyrus (chokeberry) ditto
 " Near 12096

12098 *Menziesia pilosa* (Michx.) Pers. ditto
 " with 12094 - (rust on leaves)

12099 *Melampyrum lineare* Lam ditto
 " with 12096.

12100 Liliaceae bl. greenish. ditto
 (2) Near # 12096.

12101 *Solidago* ditto
 (1) with # 12096 very common on highest mts., etc.

12102 *Cuscuta* Bickel's Knob, Randolph Co., W. Va. at apt. near 4000 ft., in Monongahela forest, near Alpena, Aug. 24, 1946. H.A. Allard.

Helianthus at Little Black Fork on Cheat River, Randolph Co., W. Va.; Aug. 24, 1946
 12103 H.A. Allard, sections = top, 2 of middle, one of base of same plant.

12104 Mint, at spring on Dry Fork road Randolph Co., W. Va., Aug. 24, 1946
 (2) H.A. Allard.

12105 *Spiraea tomentosa*? ditto
 " showing bright rose pink flowers along Cheat River near Stuart Flarent Camp; Randolph Co., W. Va., Aug. 24, 1946. H.A. Allard
 12106 Impregnet in area

" *Rhepa virginica* L. along Shafer's Fork, Randolph Co., W. Va., Aug. 24, 1946
 12107 H.A. Allard

" *Polygala* ditto
 Near 12106

12108 *Juncus* ditto
 (2) *Juncus* on Carcass east of Davis 3 miles, near 3500 ft., Aug. 26, 1946. H.A. Allard
 Tucker Co.

12109 *Vaccinium* ditto
 (4) *Vaccinium* berries shining black, with a purple tinge rather flavorescent. Among ledges near Blackbird Knob in Cabin Mts., near 4000 ft., Tucker Co., very rare in area; only 3 plants seen.

Vaccinium

on blackbird knob in Cabin Mts.,
Tucker Co., W. Va., Aug. 27, 1946

12/110 H.A. Allard, Near 4000 ft.
131 Bushes 2-3 ft. tall, in dry,
rocky soil; fruit abundant,
sweet, with spicy flavor; here
with heavy bloom, abundant,

12/111 Cult. flower in garden at
Davis, Tucker Co., W. Va.,
Aug. 27, 1946
11) Flowers purplish. H.A. Allard

12/112 *Solidago rugosa* Ait.
11) one plant in sections.
on Cabin Mt., Tucker Co., W. Va.,
at beginning of Big Stonecoal Trail,
near 4000 ft. Aug. 28, 1946. H.A. Allard.

12/113 *Solidago racemosa* Greene.
11) one plant in sections. ditto
with # 12112

12/114 *Aster umbellatus* Mill.
12) fl. white; very common everywhere;
the dominant color note in the fields.
with # 12112 ditto

12/115 *Solidago racemosa* Greene.
(2) near # 12112 ditto

12/116 *Solidago rugosa* Ait.
11) one plant. ditto
with # 12112

Solidago graminifolia (L.) Salisb.

with # 12112 same loc.
same date etc.
(See 12112)

12/117 (2) ditto

12/118 *Solidago rugosa* Ait.
11) with # 12112 ditto

12/119 *Solidago anguta* Ait.
11) On shale banks on road from
Wardensville to Romney, Hampshire Co.,
W. Va., 20 miles from Romney.
Aug. 29, 1946. H.A. Allard.

12/120 Plants short; leaves mostly basal.
(with basal rosette leaves)
13) *Paronychia polygonoides* Raf. ditto
with # 12119 on shales

12/121 *Houstonia longifolia* Gaertn. ditto
11) with # 12119 on shales

12/122 *Mint: cunila origanoides* (L.) Britton
12) On same shales with
12119: fl. rose purple, ditto
very showy.

12/123 *Helenium* ¹²¹ *modiflorum*
on dry pasture. 50 on 616; 5 miles east of
Bull Run Mt., Loudoun Co., Va.
Aug. Sept. 2, 1946. H.A. Allard

fl. tiny, white.
In moist spot in
pasture.

On Triassic area,
8 miles from Aldie,
Loudoun Co., Va.,
3 1/2 miles from route 50
on 616. Sept. 2, 1946
H.A. Allard; 5 miles
east of Bull Run mts.

12/24

(1)

12/25 In moist soil in
pasture.

ditto

12/26 Oxalis
In pasture

ditto

12/27 Polygala
(1) with # 12/26 in pasture

ditto

12/28 Gramineae
(1) with # 12/26 in cut-over
pasture.

ditto

12/29 Ambrosia artemisiifolia L.
(2) with Terminal plant with
staminate and pistillate heads.
with # 12/26.

ditto

12/30 Ambrosia artemisiifolia L.
(3) almost entirely pistillate plant
Near # 12/29
(4) (from same plant)

ditto

In cut-over
pasture.

on Triassic area, Loudoun Co., Va.,
8 miles from Aldie,
3 1/2 miles from route 50
on 616. Sept. 2, 1946
H.A. Allard.

12/31

(3)

Gramineae,
Eragrostis

In cut over
woods.

12/32 Eupatorium coelestinum L.
(7) In cut over woods.
bl. purple.

ditto

12/33 Gramineae
(4) same
In pasture near # 12/31.

ditto

12/34 Eragrostis
(1) In pasture with # 12/31

ditto

12/35 Polygala.
(1) In same pasture with 12/31

ditto

12/36 Oenothera
(1) with # 12/31
Low plant.

ditto

12/37 Gerardia tenuifolia Vahl
(2) Near # 12/31 in
old pasture.

ditto

Pynanthemum linifoloides T. & G.
on Triassic area, Loudoun Co., Va.
8 miles from Aldie, 3 1/2 mi.

12138 (2) from # 50 on 616, Sept. 2, 1946. H.A. Allard.
along roadside.
Corolla pale purplish.

12139 *Bidens aristata* (Michx.) Britton.
(2) Long armed and short armed
By roadside. flowers or plants in terminal spikes in
every colony, named farms, but
of questionable significance.
Very showy, abundant.

12140 *Centrosema virginianum* (L.) Benth.
Upper Marlborough Md.,
Near race tracks,
Prince Georges Co.,
Sept. 6, 1946. H.A. Allard.
along highway bank. bl purplish blue.

12141 *Lespedeza*.
(2) tiny purple flowers. ditto.
with # 12140

12142 (2) ~~In meadow on west slope of Pond Mt., Va.~~
~~on Triassic area 8 miles~~
~~from Aldie, Loudoun Co., Va.~~
~~Sept. 8, 1946. H.A. Allard.~~
~~8 miles from Route 50. Sept. 8, 1946.~~

12143 *Gerardia tenuifolia* Vahl
(3) *Xanthoxum* ditto
In ~~meadow~~ pasture with # 12142
on west slope

12144 *Vitis* along brook just south of
Theodore Gaf, west slope
of Pond Mt., Fauquier Co..
Sept. 8, 1946. H.A. Allard

Helianthus giganteus L.
one mile S. of Theodore Gaf,
Bull Run Mt., Va., Fauquier Co.,
west slope of Pond Mt.,
Sept. 8, 1946. In pasture.
H.A. Allard.

12145 (3) *Helianthus decapetalus* L. ditto
Near # 12145

12147 *umbelliferae*.
(2) In pasture near # 12145 ditto

12148 *Cirsium lanceolatum* (L.) Hill
(2) In pasture near 12145. ditto
Very common.

12149 (2) 8 miles from Aldie,
3 1/2 miles from # 50, due east,
Loudoun Co., Va., On Triassic area.
Sept. 14, 1946. H.A. Allard
In cut over woodlot

12150 (1) *Linum* *Hypericum gentianoides* (L.) B.S.P.
with # 12149 ditto

12151 (4) *Tridactoma dichotomum* L.
with # 12149 ditto

On Triassic area 8 miles from Aldie,
3 1/2 miles from #50, south,
Loudoun Co., Va

12152

(1)

9/14/46 H.A. Allard
In old cut over woodlot,
Hypericum

12153

(1)

Lechea
Near # 12152 ditto

12154

(1)

Grass
Near # 12152 ditto

12155

(2)

Grass
Near # 12152 ditto

12156

(2)

Solidago nemoralis
with # 12152 ditto

12157

(1)

Oenothera
Near 12152 ditto

12158

(3)

Ludwigia
Near # 12152 ditto
Roots tuberous

In old woodlot on Triassic area,
8 miles from Aldie, 3 1/2 miles
S. of #50, Loudoun Co., Va

12159

(2)

Sept. 14, 1946
H.A. Allard

12160

(3)

Houstonia missouriensis
Near # 12159 ditto

12161

Grass
Near # 12160 ditto

12162

(2)

Bidens aristata
Anns long,
Near # 12160 ditto

12163

(1)

Solidago graminifolia
var multicollis
Near # 12160 ditto

12164

(1)

Solidago rugosa
Near # 12160 ditto

12165

In dry brook bed
near # 12160 ditto

Eleocharis In wet soil along brook
on Triassic area, 8 miles
from Aldie, 3 1/2 miles S, of
#50. 9/14/46. Loudoun Co.,
H.A. Allard.

12166
Lepidogon
(1) In old woodlot near
12166 ditto

12168 In damp soil of nearly
(2) dry stream bed near ditto
12166

12169 Hieracium venosum
Abundant here, fl. tiny, yellow
In pasture near # 12166 ditto

12170 Polygala
(1) In pasture near 12166 ditto

12171 Hibiscus trionum L
(3) In garden (wild) ditto

12172 Polygala
(1) In pasture near # 12166 ditto

Grass
In dooryard, on Triassic area,
8 miles from Aldie,
Loudoun Co., Va.
12173 3 1/2 miles from #50 South.
(2) 9/14/46. H.A. Allard

12173A = *Ocimum basilicoides* - Sept. 17, 1946.
Beltville Drug gardens, Hart. Station, Beltsville, Md.
H.A. Allard

12174 Lichen on
(1) bank at Thoroughfare Gap, Cond. Mt., Va.
Traugott Co.,
Oct. 13, 1946
H.A. Allard.

12175 Grass, west slope
(3) in pasture 1 1/2 miles S,
of Thoroughfare Gap ditto

12176 with # 12175 ditto
Grass

12177 Fungi on leaves
(1) of *Lepidogon*, with # 12176 ditto
= *Uromyces proclumbeptis* (Schw.) Cwit.
Ident. by John A. Stensson.

12178 *Quercus macrocarpa*
(4) (Red Oak) In woods ditto
near # 12175

12179 *Phegopteris polypodioides*
(2) In woods on east slope ditto
1 mile S. of Thoroughfare Gap, Oct. 6, 1946
H.A. Allard.

Oxalid (terrestrial) Dominican Republic
bl yellow, Piedra Blanca.

On trail to rubber station
May 29, 1946,

12180

(1) 121-80 to 12194 inc) Howard F. Allard.
from Dominican Republic
alt 500 feet.

12181 Oxalid (terrestrial)
along Duarte highway at Kb. 43.
(1) May 29, 1946, Howard F. Allard
fl. pink red.

Small

12182 Cult. shrub, in Ciudad Trujillo.
(3) bl. yellow, April 30, 1946
Howard F. Allard

12183 Bauhinia. Brought from
U.S.D.A., Mayaguez station, April 25, 1946
Puerto Rico, 1945. Howard F. Allard
Piedra Blanca, fl. purplish streaked,
deep purple in throat.

12184 Bosa cluca, March 31, 1946
bl, spotted reddish brown over
yellow.
Dominican Republic

12185 In old field in front of
Allard's house. April 4, 1946
(3) Ciudad Trujillo. Howard F. Allard,
terrestrial

12186 Oxalid. On Duarte highway
(1) at Kb 31. April 2, 1946
fl. rose pink -
Howard F. Allard

Bauhinia originally from
Mayaguez station, Puerto Rico
at Piedra Blanca rubber station
April 24, 1946. Howard F. Allard

12187

(1) bl cream or yellowish.

12188 Terrestrial oxalid: fl. crimson.
along Duarte highway, Kb. 29.
(1) fl. crimson
Howard F. Allard

12189

shrub in hedge around
(2) Allard's, Ciudad Trujillo -
fl. white, very sweet -
June 7, 1946. Howard F. Allard

12190

(1) In Allard's yard, Ciudad
Trujillo, July 23, 1946.
Howard F. Allard.

12191

(1) Ciudad Trujillo - at
Country Club. July 6, 1946
Howard F. Allard.
Euphorbiaceae

12192

Fern. Country Club
Ciudad Trujillo, July 6, 1946
Howard F. Allard

12193

Ciudad Trujillo - in
yard, lot near Allard's
shrub 4-5 ft. high, fl. pink.
July 25, 1946
Howard F. Allard

seed in Allard's yard,
Ciudad Trujillo - Sept. 23, 1946,
Howard F. Allard,

12194

12194A Yellow bl. bulbous plant in H.F. Allard's
yard, Ciudad Trujillo. *Naturalized readily*. This
grew from seed in greenhouse at Beltsville, 1945-46.

12195 Pure white form of *Hibiscus* ^{mont. bl. July}
syriacus in Allard's garden; a 1947.
seedling, no eye spot. Sept. 22, 1946
H.A. Allard,
Beltsville, Md., Chron. London, 10 (New Series)
Oct. 26, 1878, p. 525, a short note by T. Moore

12196 *Aster ericoides* On Triassic area
Fauquier Co., Va., 8 miles from Aldie,
3 1/2 miles from route 50, on 616
Sept. 29, 1946, H.A. Allard.

12197 ^{dark}
(1) on sticks

Bull Run Mt., Va.,
Fauquier Co., Va.,
on ledges of Pond Mt.,
just south of Thoroughfare Gap,
Oct. 27, 1946
H.A. Allard.

12198 *Polygala*
(1) In pasture west slope 2 miles
S. of Thoroughfare Gap. ditto

12199 Moss
(1) ditto
on high ledges just S. of
Thoroughfare Gap.

12200 Moss
(1) with 12199
ditto

on ledges of Pond Mt., Va.
Fauquier Co., just south
of Thoroughfare Gap,
Oct. 27, 1946, H.A. Allard,

12201

(1) Moss
with # 12199

12202 Lichen
(1) On rocks with # 12199 ditto

12203 *Hepatica*
(1) On rocks with 12199 ditto

12204 *Cladonia*
(1) on rocks and soil near 12199 ditto

12205 *Cladonia*
(1) on rocks on ledges near # 12199 ditto

12206 Moss
(1) on ledges near # 12199 ditto

12207 Moss + liverworts
(1) in competition, near
12199 ditto

Moss

On ledges of Pond Mt., Va
Fauquier Co.
Oct. 27, 1946.
H.A. Allard
Just S. of Thoroughfare Gap

12208

(1)

12209 Mosses (two)
(1) on ledges above,
near # 12208

ditto

12210 Mosses
(1) on ledges near # 12208

ditto

12211
(1) Moss with # 12208

ditto

12212 Moss
(1) Near # 12208

ditto

12213 Moss
(1) on soil on bank near
12208

ditto

12214 Moss
(1) on ledges near # 12208

ditto

On ledges of Pond Mt., Va
just south of Thoroughfare Gap,
Oct. 27, 1946. H.A. Allard.

12215

(1)

on soil of bank at
ledges above,

12216 on ledges near
(1) # 12215

ditto

12217 Moss
(1) on ledges near # 12215

ditto

12218 Moss
(1) on ledges near # 12215

ditto

12219 Moss
(1) Near # 12215

ditto

12220 Moss
(1) on ledges above near
12215 - Nov. 10, 1946

12221 Moss
(1) near # 12220
Nov. 10, 1946

Lichens on rock, On ledges of Pond Mt.,
Vas just S. of Thoroughfare Gap,
12222 Nov. 10, 1946. H.A. Allard

12223 Moss
(1) On dead log near # 12222
ditto

12224 Moss on soil on ledges
(1) near # 12222 ditto

12225 Hepatic
(1) On dead log on east slope
of Pond Mt., 2 miles S. of Thoroughfare
Gap, Nov. 10, 1946. H.A. Allard

12226 Moss
(1) on dead log with # 12225 ditto

12227 Moss
(1) on high ledges near
12222 - Nov. 24, 1946
H.A. Allard ditto

12228 *Aristolochia ringens*
(1) Piedra Blanca, Dominican Republic,
Flowers from same plant as #
which see. Flowered last part October.

Yellow fruited Hally H.A. Allard
from National Forest near
Alpena, W. Va., Nov. 1946.
12229 Seed to me by C. Cramer.

A colony of trees near
with yellow fruits. ^(ditto) *Stephania* ^{Red.} *Xanthoxyla*

12230 Solanum seed from Piedra Blanca,
D.R. Republic, 1946. Fruits about
5/4 in dia., orange red, dry. Plant grown at
Beltsville, Md., B.P. & Station summer 1946 in greenhouse.
specimen taken Dec. 3, 1946

12231 Moss on soil on rock.
(1) On cliffs of Pond Mt., Fauquier Co., Va.,
Dec. 1, 1946. H.A. Allard,
just S. of Thoroughfare Gap.

12232 Moss at base of oak tree
(1) near # 12231
12/1/46

12233 Moss on dead tree near
(1) # 12231 12/1/46

12234 Moss on soil at base of tree in
(1) woods, east slope Pond Mt., Va.
Dec. 8, 1946. H.A. Allard

12235 Moss on soil near # 12234
Dec. 8, 1946

East slope Pond Mt.
Fauquier Co. Va. Dec. 8, 1946
H.A. Allard

12236 Moss
On soil on rocks in woods,
near Therofare Gap

12237 Moss
on soil in woods near
12236

12238 ^{C.W.} *Culpeperia gracilis*
4435 North Park Drive,
Arlington, Va. Feb. 2, 1947
H.A. Allard

12239 Moss
2 miles S. of Therofare Gap,
on rocks in woods in water.
Pond Mt., Va.
Fauquier Co.
April 6, 1947
H.A. Allard

12240
ditto

12241 Rust on
(many) *Claytonia virginica*
Puccinia mariae - Wilson I
Pond Mt. area
South of Therofare Gap
3 miles S. along Broad
Run on Flood Plain
Fauquier Co. April 20, 1947
H.A. Allard

12242
many
Sun on leaves of *Erythronium americanum*
Ustilago hauffleri Fehle. (Near for Va.)
ditto
Near # 12241

Therofare Gap
3 miles down from Therofare
Gap. April 13, 1947
H.A. Allard

12243
(Near # 12241)

12244 H.A. Allard's garden (cut.)
(2) *Elaeagnus* sp. fl. very fragrant.
May 17, 1947
3000 - 7th St. North
Arlington - Va

12245 Moss on
dead hickory tree Pond Mt., Va
Fauquier Co. Va.
near Therofare Gap.
May 17, 1947
H.A. Allard

12246 *Vicia*
In field and pasture ditto

12247 *Panicum*
in dry soil On trail to
High Point from
Therofare Gap, Fauquier
Co., Va. Bull Run Mt.
June 8, 1946. H.A. Allard

12248 *Tephrosia*
dry after ridge ditto
Near # 12247

12249 *Thymus*
mould near # 12248 in leaf
ditto

Asclepias fl. white with dull purple
red at base claws,
12250 on trail near ^{Tauquigon Co., Va.}
High Point - in ^{June 8, 1947}
open woods, H.G. Allard
very showy, full bloom,
=*A. variegata* L.

12251 Carex, on cliffs near
High Point,
in dry soil, ditto

12252 Panicum
with # 12251 ditto

12253
" Chamaelirium ^{Dry Fork, near}
^{luteum (L.)} Parsons, Tucker Co.,
Rich woods and banks, ^{June 16, 1947.}
in places common. H.G. Allard

12254 ^{Full bloom}
" *Stellaria borealis* Bigel. at bridge over
var. *isophylla* Fern. ^{at Davis, near}
Bears Creek,

12255 ^{paper pulp ruins; from}
" *Stellaria graminea* L. ^{original color previously -}
^{found #11844, now in fruit}
^{color had almost disappeared July 27,}
Beside ditto ^{H.G. Allard,}
12254, very abundant, whitening
the meadows.

12256
" *Oxalis acetosella* L.
in woods on slope of Bearden
knob, near Davis, alt. = 3846 ft. alt.,
Tucker Co.,
June 16, 1947
H.G. Allard

on Caraan Mt., Tucker Co., W. Va.
alt 3800 ft; June 16, 1947
on ledges. H.G. Allard

Carex
12257
" "

12258 Grass. In Caraan Valley, Tucker Co.,
W. Va., southeast of Bearden knob
in ~~woods~~ meadow, June 16, 1947
H.G. Allard, ditto

12259 Carex. near # 12258
" ditto

12260 *Viburnum nudum* L.
" with # 12257; very common; full
bloom. ditto

12261 Carex. In grassy area near
" # 12257. ditto

12262 Grass. with # 12261
" ditto

12263 Carex near 12261
" ditto

Houstonia serpyllifolia Michx
In wet ground, Canaan Valley,
Tucker Co., W. Va.; S.E. of Bearden Knob,
12264 June 16, 1947, H.A. Allard,
" " fl. blue.

12265 *Carex* Near # 12264 ditto
" " "

12266 *Sisyrinchium* In pasture
near # 12264, east
of Bearden Knob. June 17,
H.A. Allard

12267 Smutted *Danthonia compressa* Nutt.
" " plants at fire tower on Bearden
Knob, Tucker Co., W. Va., near Davis.
at 3864 ft. Infrequent; with
collar fungus which is common
12268 here. ditto

12269 *Hieracium aurantiacum* L. ditto
" " In open, stony clearings, on Canaan Mt.,
Tucker Co., W. Va., near Bearden Knob.
June 17, 1947. Occasional.
Very showy, orange red or
crimson.

12269 *Euphorbia darlingtonii* Gray
" " Near # 12266. Several clumps.
June 17, 1947
H.A. Allard ditto

12270 *Luzula* Near # 12269 in thicket ditto
" " "

Houstonia In Canaan Valley,
S.E. of Bearden Knob, Tucker Co.,
W. Va., June 17, 1947, H.A. Allard,
12271 fl. white; eye yellow.
" " In damp soil at 3300 ft.

12272 Gramineae. *Stellaria graminea* L. ditto
" " On slope of Bearden Knob,
at 3600 ft., in heavy woods
Tucker Co., W. Va. H.A. Allard
June 17, 1947

12273 *Stellaria graminea* L. ditto
" " In Canaan Valley, east of
Bearden Knob at 3300 ft.
June 17, 1947,
H.A. Allard.

12274 *Scirpus rubrotinctus* Tuckerm.
" " In damp soil east of Bearden Knob
Tucker Co., W. Va., June 17, 1947
abundant here. ditto

12275 *Azalea arborescens* (Pursh) Torr.
" " along Blackwater River near
Blackwater Falls, Davis, Tucker Co.,
W. Va., June 19, 1947, H.A. Allard
Very fragrant; showy; white fl., abundant

12276 Smutted *Danthonia compressa* Nutt.
" " 4 miles below Davis on east side
Blackwater River. June 19, 1947
H.A. Allard, occasional; but
collar fungus common. ditto

12277 Smilax Blackwater Canyon
" " near # 12276. ditto
June 19, 1947.
H.A. Allard

Carex virgata 2 1/2 mi. down Canyon Trail,
var. *gymandra* in Blackwater River, below Davis,
12278 Tucker Co., W. Va., June 19, 1947
(2) H.G. Allard; damp soil.

Collor fungus on *Santhonia* 3 1/2 miles
12279 down Canyon Trail below
Davis, Tucker Co., W. Va., June 19, 1947
H.G. Allard; ditto

12280 *Carex* On Bearden Knob, at
fire tower, Tucker Co., W. Va.,
S. of Davis. alt. 3864 ft.,
in dry stony soil. June 20, 1947
H.G. Allard.

12281 *Carex*. Near # 12280 ditto

12282 *Carex* Near # 12280 ditto
same habitat etc.

12283 Collor fungus on
12283 *Santhonia* (all one clump)
near # 12280. ditto

12284 *Carex*. ditto
in open habitat near
12280

Near Oakland, Garrett Co.,
Agalpa arborescens (Pursh) Torr. in woods,
Md. June 20, 1947
12285 Deep pink fl., fragrant. H.G. Allard,
(2)

12286 In Craneyville Bog 10 miles
N. of Terra Alta, Preston Co.,
W. Va., June 20, 1947. H.G. Allard,
= *Luzula laricina* (Du Roi) Koch.

12287 *Callitriche* ditto
in brook in bog with
12286.

12288 *Carex* in sandy stony soil among
sandstone rocks near Bearden
Knob tower, Tucker Co., W. Va.; ditto
at 3700 ft. June 20, 1947
H.G. Allard.

12289 *Carex* Near # 12288 ditto

12290 *Carex* near # 12288 ditto

12291 *Elephantella monticola* Gray ditto
(2) Near # 12288.
mid bloom.

Myosotis lapa Lehman one mile
N. of Aurora, Preston Co. W. Va.,
June 20, 1947, in wet soil
12292 along brook; showy, abundant
(21) here. H.G. Allard.

12293 *Panicum*
on shales of Mill Run
Trucker Co. W. Va., near
Hendricks, June 21, 1945
H.G. Allard.

12294 *Grass*
near # 12293 ditto

12295 *Carex* on Dry Fork,
foot of Monarch Knob,
Trucker Co., W. Va. ditto

12296 *Moss*
at entrance to Elk Lick
cove in forest. ditto

12297 *Oxalis*
ditto

12298 *Grass* on Elk Lick
Run highway to Hendricks,
Trucker Co., W. Va. ditto
June 21, 1947.
H.G. Allard

Grass on highway along Elk Lick Run,
Trucker Co., W. Va., on way
to Hendricks, June 21, 1947
12299 H.G. Allard. Near 12298
(V)

Eriogonum atrorubescens Jacq.
12300 at natural well on Dry Fork ditto
highway to Hendricks. ditto
June 21, 1947. H.G. Allard.
Full bloom.

12301 *Meharia cordata* (Walt.) Britton
in woods near Elk Lick case,
Trailing stems; fl. blue. ditto
my first find of this species.

12302 *Mint*
near # 12301 ditto

12303 *Galium concinnum* T. & G.
On dry bank near Parsons. ditto
fl. white; plants reclining.

12304 *Magnolia fraseri* Walt.
on Canyon Trail on
Monarch Knob, Trucker Co., W. Va.
June 22, 1947
H.G. Allard.

12305 *Taraxacum officinale* Weber
at quarry (limestone) near
Elk Lick case, Trucker Co., W. Va. ditto
June 21, 1947. H.G. Allard
(plants enormous)

Carex along Elk Lick Run
on road to Hendricks, W. Va.,
Tucker Co., W. Va., June 21, 1947
12306 H.A. Allard.
(2)

12307 Grass.
near # 12306 on
shales. ditto

12308 Asclepias quadrifolia Jacq
on Mill Run on shales
on road to Hendricks, Tucker Co.,
W. Va., June 21, 1947
H.A. Allard ditto

12309 Panicum with # 12308 ditto

12310 Phlox paniculata L
Near # 12306 (same data)
fl. bluish pink.

12311 Moss. Bearden Knot,
Tucker Co., W. Va.
June 22, 1947.
H.A. Allard.
on large rocks in forest.

12312 Carex virivita var. gynanthes
on canyon trail 3 miles down
Blackwater River from Davis,
Tucker Co., W. Va., June 22, 1947
(canyon river). H.A. Allard

Azalea lutea
on Moyark Knot at
fire station tower. June 22, 1947
H.A. Allard. (orange fl.)

12313
" |

12314 Smilax herbacea L.
with # 12313 ditto data

12315 Grass near # 12313 ditto
(2)

12316 Carex Top of Caraan Mt.,
Tucker Co., W. Va.
In pure white sand on sandstone
ledges June 22, 1947
H.A. Allard.

12317 Galium
In woods on Bearden Knot
Tucker Co., W. Va.
June 22, 1947.
H.A. Allard

12318 Menziesia pilosa (Michx.) Pers.
with # 12313. full bloom
(same data)

12319 Azalea lutea
" fl. deep orange red.
with # 12313. (same data)

Azalea lutea
fl. orange. On top of Mountain Knot,
Tucker Co., W. Va.,
12320 June 22, 1947. H.A. Allard,
(1)

12321 *Sorbus americana* (Marsh) D.C.
(1) On top of Cannon Mt., near
Davis, Tucker Co., W. Va.
June 22, 1947. (leaves very foul
H.A. Allard of fruit)

12322 *Gabium concinnum* T. & G.
(1) Near Oakland, Garrett Co., Md.,
on roadside bank.
June 24, 1947. H.A. Allard.

12323 Grass.
(1) On shales near Petersburg, W. Va.,
Grant Co., June 24, 1947
H.A. Allard.

Sisypsis
12324 In woods - on shales
(2) near # 12323 ditto
(large colony) by roadside.

12325 *Medicula nasturtium-aquaticum*
(2) (L.) Britton & Rendle.
In brook 12 miles above
Scheer, Grant Co., W. Va.,
June 24, 1947
H.A. Allard.

12326 *Veronica anagallis-aquatica* L.
(3) In brook with # 12325, where
abundant ditto data

Hydrangea arborescens L.
on shales near Petersburg, W. Va.
Grant Co., June 24, 1947.
12327 H.A. Allard,
(1) abundant; full bloom.

Carex. 7 miles north of Dolly Sods,
12328 on the huckleberry plants, Tucker Co.,
W. Va.; June 23, 1947. H.A. Allard
In dry rocky soil - at 4000 ft

12329 *Asplenium* On sandstone
(1) ledges near # 12328 ditto
vertical

12330 *Dicentra spicata* (Ker.) Torr
(3) Common on the rocky plains ditto
here; in full bloom, beautiful now.

12331 Carex
(1) In sand on ledges above ditto

12332 *Geranium* On top of knob at
(2) Scheer, Greenland Gap,
Grant Co., W. Va. June 25, 1947
H.A. Allard

12333 In woods near # 12332
(2) grass. ditto

Marrubium vulgare L.
on knob in pasture near
Scherr at Greenland Gap,
Grant Co., W. Va. June 25, 1947
12334 H.A. Allard. Common here.
" "

12335 Carex on top knob in dry
woods near # 12334 ditto
" "

12336 Grass ditto
" with 12335

12337 Galium ditto
" with # 12335

12338 Grass in shale at Scherr,
near Greenland Gap, Grant Co., W. Va.
June 25, 1947. H.A. Allard
Much infested with yellow fungus.
= *Festuca elatior* L.

12339 *Cynoglossum officinale* L.
" (2) with # 12334. same data.

12340 *Acalypha*,
" with # 12335. same data.

In woods near # 12336.
Same data, loc. etc.
Grass

12341
" "

12342 Mint in pasture on steep,
dry shales near # 12334.
" same data, loc. etc.
bl. purplish.

12343 Rosa
In same high pasture
with # 12334

12344 Carex
" (2) in shale 2 miles west of
Red House, on road to Oakland,
Mad. Garrett Co., June 26, 1947
H.A. Allard

12345 *Galium boreale* L.
" (8) Large patch pure, here, bright
white with # 12344

12346 *Oenothera*
" with # 12345

12347 *Lobelia*
" with # 12345

Thalictrum in swale 2 miles west
of Red House, on highway to
Oakland, Garrett Co., Md.,
12348 June 26, 1947. H.G. Allard
" (with #12345)

12349 *Sisyrinchium*
" with # 12348

12350 *Tragopogon pratensis* L.
" on shales near Red Run,
Tucker Co., W. Va. June 26, 1947
H.G. Allard. (Is it *T. dubius*?)

12351 *Lilium canadense* L.
" in pasture near # 12350
same data

12352 *Eleocharis*
" with 12348 same data

12353 *Diervilla lonicera* Mill
" on top Cabin Mt., on Blackbird
Knob, Tucker Co., W. Va. June 27, 1947
H.G. Allard. Common; full bloom;
fl. yellow.

12354 Grass
" on ledges near # 12353 ditto

Carex with # 12354
same data

12355
"

12356 *Veronica anagallis-aquatica* L.
" in water on slope of
Cabin Mt., near Blackbird
Knob, Tucker Co., W. Va.
June 27, 1947. H.G. Allard

12357 *Galium verum* L.
" Roadside near Galt, Hampshire Co.,
W. Va., on U.S. 50. fl. yellow.
Extremely abundant here in fields
and roadsides

12358 *Rhododendron maximum* L.
" in thicket at Greenland Gap,
near Scherr, Grant Co., W. Va.,
full bloom; very showy (Daisy)

12359 *Cyperaceae*
" small plants at High Point
Cliffs, Bull Run Mountain,
Fauquier Co., Va. July 6, 1947
H.G. Allard

12360 *Taraxacum canadense* L. var. *virginicum* (L.) Eaton.
" Pond Mountain, west slope,
July 13, 1947. H.G. Allard.
In pasture in thicket 1/2 mile south
of Therofare Gap. Large colony
here.

12361 *Albium vineale* L. typical
" See Rhodora No. 581 - May 1947. p. 132.
near # 12360. ditto

Carex on ledges of Pond Mountain,
Fauquier Co., Va., 1 1/2 miles south
of Theophrastus Gap. July 13, 1947
12362 H.A. Allard,
(2)

12363 Red flowered grasses with
impasture at foot of ^{west} slope just
west of cliffs where 12362 occurred.
(1)

12364 *Diodia teres* Walt. typical
(2) 1 mile north of Hefwell Gap,
Bull Run Mt., Va., Fauquier Co.,
July 20, 1947. H.A. Allard,
in pasture, west slope.

12365 Blighted twigs of rocks distant oak
(several) from trees on High Point cliffs,
Bull Run Mt., Fauquier Co., Va.,
Aug. 3, 1947. H.A. Allard.
Gift to John A. Steensen.

12366 *Melissa officinalis* L.
(3) In H.A. Allard's garden, 3000-7th St. North,
Arlington, Va. Aug. 1, 1947
H.A. Allard. Demore sent.

12367 *Castanea dentata* bl. whitish.
(2) or hybrid with *disjuncta*.
High Point, 2 1/2 miles N. of Theophrastus Gap,
Bull Run Mt., Fauquier Co., Va.
Aug. 3, 1947. H.A. Allard

12368 (Sheets 15-18 ft. tall). Some leaves
without teeth.
(1) *Desmodium rotundifolium*
as dollar leaf.
in dry woods.
Near # 12367
same date.
H.A. Allard.

Presumably *Ipomoea pandurata*, but
large white blossoms last corolla in
the tube at throat, growing near # 12368
12369 and # 12370, in dry woods.
(1) Aug. 3, 1947.
same data as for # 12368

12370 *Ipomoea pandurata* with unusual
(1) color - in corolla in throat.
growing near # 12369 - same data

12371 *Cichorium intybus* with pure
(1) white flowers. at Theophrastus Gap,
Bull Run Mt., Va., Fauquier Co.,
Aug. 3, 1947
H.A. Allard

12372 Fern.
(1) in deep reticulate in woods, east slope of
Pond Mt., Fauquier Co., Va. 1 1/2 miles S. of
Theophrastus Gap. July 20, 1947. H.A. Allard

12373

12374

12375

12376

12377

12378

12379

12380

12381

12382

12383

12384

12385

12386

12387

12388

12389

12390

12391

12392

12393

12394

12395

12396

12397

12398

12399

12400

12401

12402

12403

12404

12405

12406

12407

12408

12409

12410

12411

12412

12413

12414

12415

12416

12417

12418

12419

12420

12421

12422

12423

12424

12425

12426

12427

12428

12429

12430

12431

12432

12433

12434

12435

12436

12437

12438

12439

12440

12441

12442

12443

12444

12445

12446

12447

12448

12449

12450

12451

12452

12453

12454

12455

12456

12457

12458

12459

12460

12461

12462

12463

12464

12465

12466

12467

12468

12469

12470

12471

12472

12473

12474

12475

12476

12477

12478

12479

12480

12481

12482

12483

12484

12485

12486

12487

12488

12489

12490

12491

12492

12493

12494

12495

12496

12497

12498

12499

12500

12501

12502

12503

12504

12505

12506

12507

12508

12509

12510

12511

12512

12513

12514

12515

12516

12517

12518

12519

12520

12521

12522

12523

12524

12525

12526

12527

12528

12529

12530

12531

12532

12533

12534

12535

12536

12537

12538

12539

12540

12541

12542

12543

12544

12545

12546

12547

12548

12549

12550

12551

12552

12553

12554

12555

12556

12557

12558

12559

12560

12561

12562

12563

12564

12565

12566

12567

12568

12569

12570

12571

12572

12573

12574

12575

12576

12577

12578

12579

12580

12581

12582

12583

12584

12585

12586

12587

12588

12589

12590

12591

12592

12593

12594

12595

12596

12597

12598

12599

12600

12601

12602

12603

12604

12605

12606

12607

12608

12609

12610

12611

12612

12613

12614

12615

12616

12617

12618

12619

12620

12621

12622

12623

12624

12625

12626

12627

12628

12629

12630

12631

12632

12633

12634

12635

12636

12637

12638

12639

12640

12641

12642

12643

12644

12645

12646

12647

12648

12649

12650

12651

12652

12653

12654

12655

12656

12657

12658

12659

12660

12661

12662

12663

12664

12665

12666

12667

12668

12669

12670

12671

12672

12673

12674

12675

12676

12677

12678

12679

12680

12681

12682

12683

12684

12685

12686

12687

12688

12689

12690

12691

12692

12693

12694

12695

12696

12697

12698

12699

12700

12701

12702

12703

12704

12705

12706

12707

12708

12709

12710

12711

12712

12713

12714

12715

12716

12717

12718

12719

12720

12721

12722

12723

12724

12725

12726

12727

12728

12729

12730

12731

12732

12733

12734

12735

12736

12737

12738

12739

12740

12741

12742

12743

12744

12745

12746

12747

12748

12749

12750

12751

12752

12753

12754

12755

12756

12757

12758

12759

12760

12761

12762

12763

12764

12765

12766

12767

12709 Vaccinium
near blackbird house
for low, 10/20

12761

12762

12763

12764

12765

12766

12767

12 12768

12 12769

12 12770

12 12771

12 12772

12 12773

12 12774

12709 *Vaccinium*.
 Near Blackbird Knob on Cofair Mt.,
 Tucker Co., W. Va., near 4000 ft.
 Only 3 plants seen in area; 2 1/2-3 ft
 high. Two plants near ledge were red
 with shining black fruit; juice
 carmine red; many seeds.
 Have never seen it in the area before.
 Fruit borne singly on slender,
 drooping peduncles, from each
 leaf axil. Sweet, but tasteless.
 Lvs glabrous.
Vaccinium erythrocarpum Michx.

